

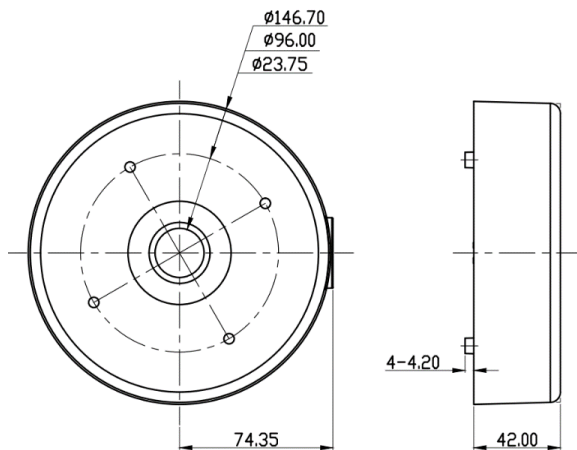
AK-26 Quick Installation Guide (EN)

PRIOR to USE

Install the mount onto a strong structure such as concrete wall

Use the supplied accessories when installing the mount bracket depends on mounting position

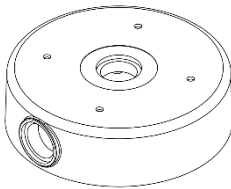
DIMENSION (Unit: mm)



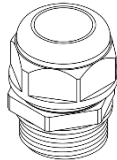
SPECIFICATION

Construction: Aluminum Cast
Environment: Ceiling mount for a Bullet
Dimension(mm): 146.7x46.2mm
Weight: 248g (0.55 lb)

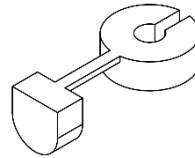
PARTS SUPPLIED



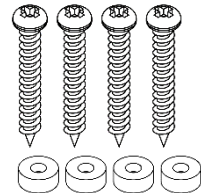
Junction Box



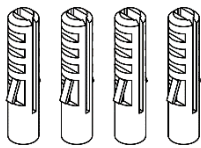
Waterproof Stopper



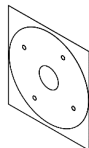
Stopper for Wire



Screws, Water-proof Rubber



4 x Expansion Bolt



Installation Template



QIG

INSTALLATION

● CEILING MOUNT

1. Locate the mounting template at the installation position and drill the wall.
2. Hammer the 4 expansion screws into the wall holes drilled
3. Route the power and BNC cable through the Box
4. Tight the box to wall through the three screws
5. Insert the box ring to the mounting plate for waterproofing
6. Open the dome cover by loosening screws
7. Connect the power and BNC cable with the camera cables
8. Assemble the vandal proof dome base to the mounting plate using the assembly screws
9. Set the camera's viewing angle
10. Put the dome cover to the dome unit and tighten screws.

