

Dome-CH6 Quick Installation Guide (EN)

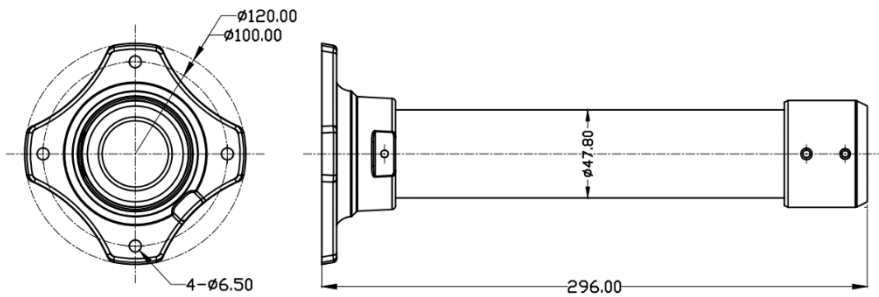
PRIOR to USE

Install the mount onto a strong structure such as concrete wall

Use the supplied accessories when installing the mount bracket depends on mounting position

DIMENSION (Unit: mm)

SPECIFICATION



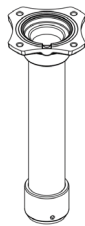
Construction: Aluminum Cast

Environment: Ceiling mount

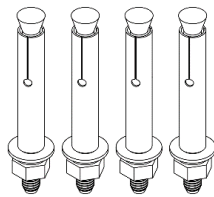
Dimension (mm): $\phi 120.0 \times 296.0$ mm

Weight: 518g (1.15lb)

PARTS SUPPLIED



Bracket Pipe



Expansion Bolt



Screw Driver



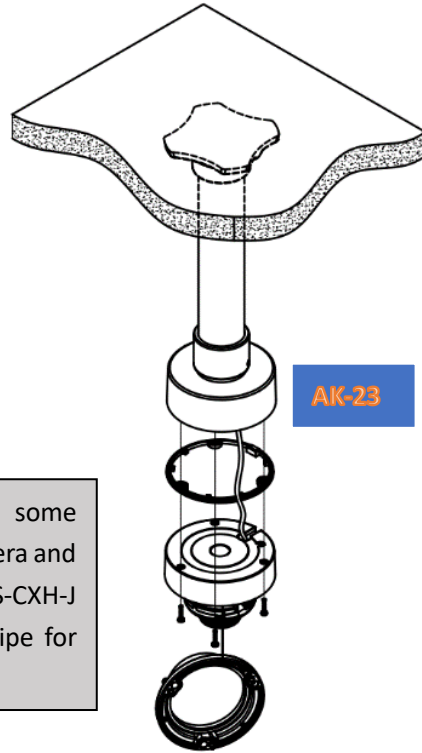
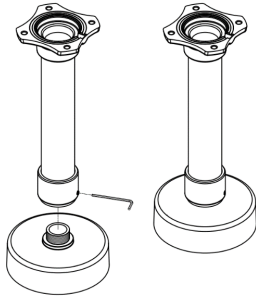
QIG

INSTALLATION

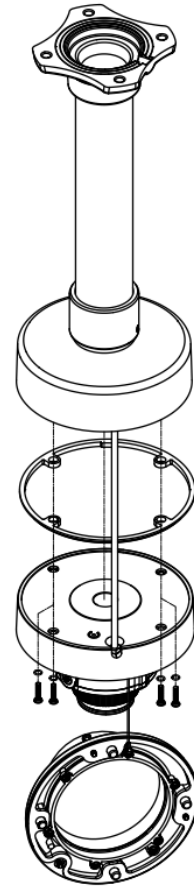
● Ceiling Mount w Junction Box

1. Locate at the installation position and drill the wall.
2. Hammer the 4 expansion screws into the wall holes drilled
3. Route the power and BNC cables through the pipe
4. Tight the pipe to wall through the four screws
5. Screw the box into the Pipe, the Pipe can match with AK23 or AK 25 Box
6. Insert the box ring for waterproofing
7. Open the dome cover by loosening screws
8. Connect the power and BNC cable with the camera cables
9. Fixed the Vandal-Proof Dome base to the Junction box
10. Set the camera's viewing angle
11. Put the dome cover to the dome unit and tighten screws.

Dome-CH6 Quick Installation Guide (EN)



AK-23

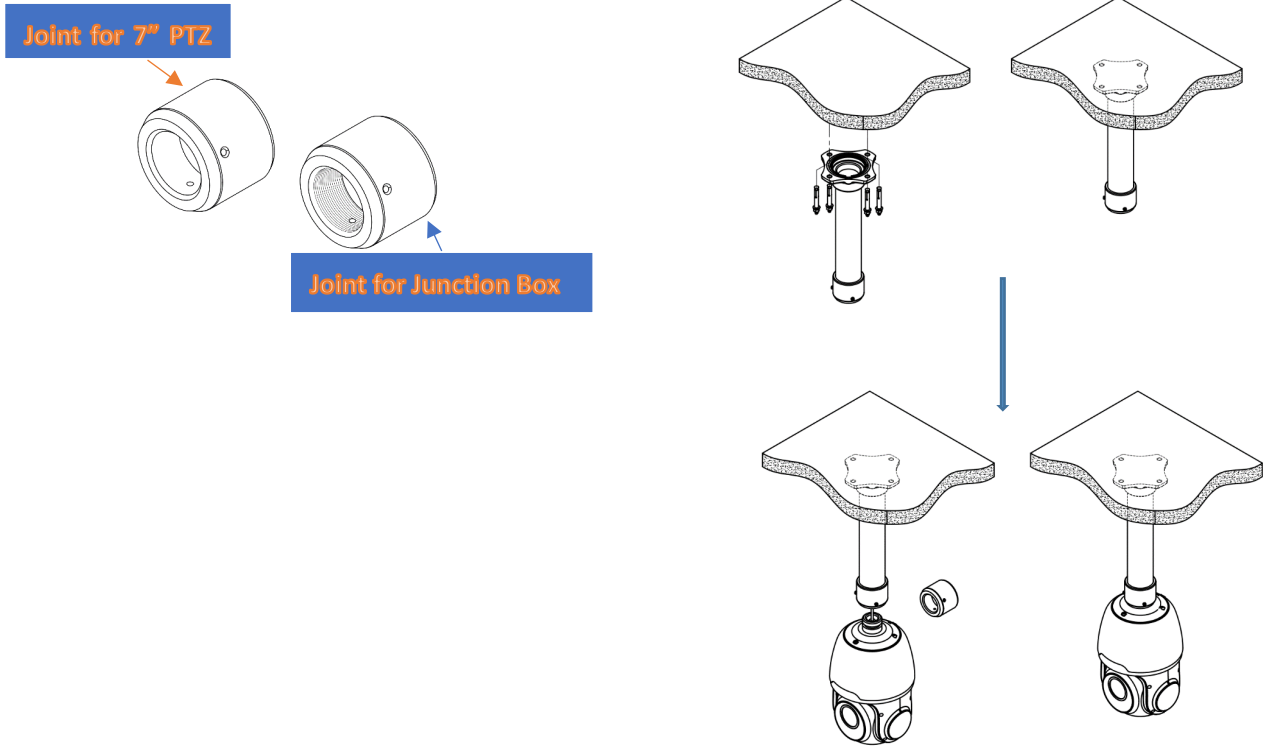


AK-25

Note: Also you can choose some Junction box matching Bullet camera and with thread structure (Such as, RS-CXH-J or RS-CXH-B etc) to match the pipe for ceiling mount.

● Ceiling Mount w 7" PTZ Camera

1. Change the Joint shown as follows, we can ceiling mount the PTZ camera by changing the joint.
2. Details operation steps please refer to the above-mentioned **Ceiling Mount w Junction**



eneo® is a registered trademark of
VIDEOR E. Hartig GmbH
Exclusive distribution through
special-ised trade channels only.

VIDEOR E. Hartig GmbH
Carl-Zeiss-Straße 8
63322 Rödermark/Germany
Tel. +49 (0) 6074 / 888-0
Fax +49 (0) 6074 / 888-100
www.videor.com
www.eneo-security.com

Technical changes reserved
© Copyright by VIDEOR E. Hartig
GmbH Version 08/2022