



EN

# Quick Installation Guide

**1/2.8" Network Dome, PTZ, 12x,  
Day&Night, 1920x1080, 12/24V,  
PoE, IP66**

**IPP-62A0012M0A**

## Content

<b>Components</b> .....	<b>5</b>
<b>Installation</b> .....	<b>6</b>
Installation.....	6
Locking Dome Camera .....	6
Basic Configuration of Camera System.....	8
Micro-SD Card Insertion .....	9
Connections .....	9
Connecting the Network.....	9
Connecting Audio .....	9
Connecting Alarms .....	10
Connecting the Power .....	10
Network Connection & IP Assignment.....	11
<b>Operation</b> .....	<b>12</b>
Access from a browser.....	12
Access from the internet.....	13
Setting the admin password over a secure connection.....	13
Live View Page.....	14
General controls .....	14
Control toolbar.....	14
Video Streams .....	15
Playback .....	16
Network Camera Setup.....	18
Resetting to the factory default settings.....	19
Further information .....	20

## Safety instructions

### General safety instructions

- Before switching on and operating the system, first read this safety advice and the operating instructions.
- Keep the operating instructions in a safe place for later use.
- Installation, commissioning and maintenance of the system may only be carried out by authorised individuals and in accordance with the installation instructions - ensuring that all applicable standards and guidelines are followed.
- Protect the devices from water penetration and humidity, since these can cause lasting damage.
- Should moisture nevertheless enter the system, under no circumstance switch on the devices under these conditions, instead send them for examination to an authorised specialist workshop.
- The system must never be used outside of the technical specifications, since this can destroy it.
- The device must be protected from excesses of heat, dust, humidity and vibration.
- When separating the system from the voltage supply, only ever use the plug to pull out the cable. Never pull directly on the cable itself.
- Lay the connecting cables carefully and check that they are not mechanically stressed, kinked or damaged and that no humidity can penetrate into them.
- In the event of a malfunction, please inform your supplier.
- Maintenance and repairs may only be carried out by authorised specialist personnel.
- The system must be isolated from the power supply before opening the housing.
- The device may only be opened by qualified service personnel. Unauthorised access invalidates any warranty claim.
- Connection cables should always be exchanged through Videor E. Hartig GmbH.
- Use only original spare parts and accessories from Videor E. Hartig GmbH.
- The housing should only be cleaned using a mild domestic cleaning agent. Never use solvents or petrol as these can permanently damage the surface.
- During installation, it is essential to ensure that the seals provided are correctly installed and that they are not displaced during installation. Damaged seals must not be installed and will invalidate any warranty.
- The installer is responsible for the maintenance of the enclosure as per the technical data, e.g. by sealing the cable outlets with silicone.
- Wire end ferrules should be used when shortening the flexible connection cables.
- The devices may only be operated in the temperature range indicated in the data sheet and within the defined air humidity range.

### Product - Specific Safety Instructions

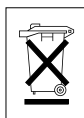
- The camera may never be pointed directly at the Sun with the aperture open (this will destroy the sensor).
- It is unavoidable that during manufacture and to a certain extent during later use, humidity will be present in the ambient air within the device's housing. In the event of large temperature fluctuations, this humidity may condense inside the housing.
- To avoid this condensation inside the very tightly sealed housing, the manufacturer has inserted silica gel sachets in the housing of the various camera types.
- It is however a physical given, that these silica gel bags will reach saturation after a certain amount of time. They should therefore be replaced with new silica gel sachets.
- During installation, it is essential to ensure that the seals provided are correctly installed and that they are not displaced during installation. Damaged seals must not be installed and will invalidate any warranty.
- A multipolar, easily accessible isolation device should be installed in the proximity of the IR Spotlight, in order to disconnect the device from the power supply for service work.
- The earth connection must be made according to the low impedance requirement of DIN VDE 0100.
- Subsequent painting of the equipment surface can impair the function.
- Any warranty claim is invalidated by subsequent painting.
- A safety margin of > 1m from the spotlight must be maintained when viewing directly into the IR Spotlight in a darkened environment.
- Do not look directly at invisible LED radiation using optical instruments (e.g. a reading glass, magnifying glass or microscope), since this can endanger the eyes, LED Class 1M.
- Operation of the IR spotlight with a defective cover or during repair is prohibited.

### Class A device note

This is a Class A device. This device can cause malfunctions in the living area; in such an event, the operator may need to take appropriate measures to compensate for these.

### WEEE (Waste Electrical & Electronic Equipment)

Correct Disposal of This Product (Applicable in the European Union and other European countries with separate collection systems).



This marking shown on the product or its literature, indicates that it should not be disposed with other household wastes at the end of its working life. To prevent possible harm to the environment or human health from uncontrolled waste disposal, please separate this from other types of wastes and recycle it responsibly to promote the sustainable reuse of material resources. Household users should contact either the retailer where they purchased this product, or their local government office, for details of where and how they can take this item for environmentally safe recycling. Business users should contact their supplier and check the terms and conditions of the purchase contract. This product should not be mixed with other commercial wastes for disposal.

### Graphical symbols

Please pay attention to the safety instructions, and carefully read through this instruction guide before initial operation.

Important points of warning are marked with a caution symbol.

Important points of advice are marked with a notice symbol.

## Components

This system comes with the following components;

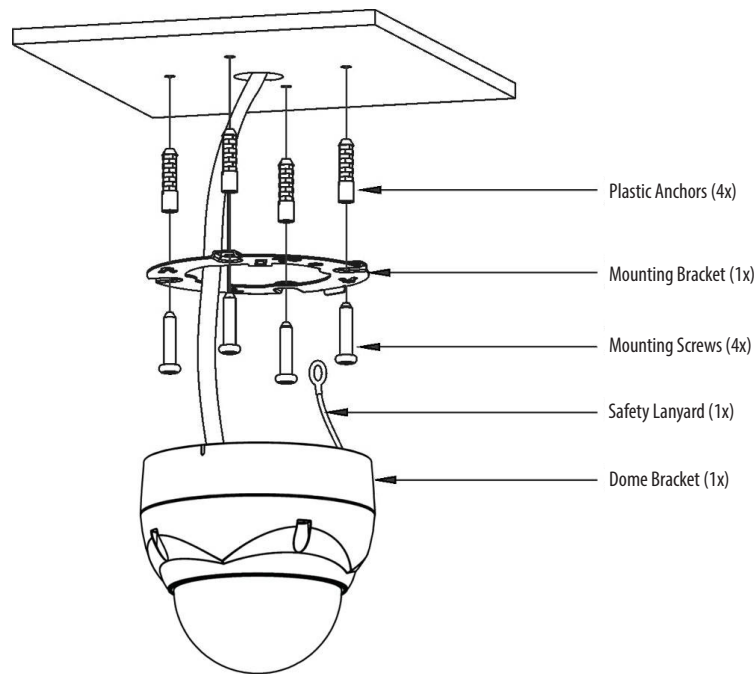
- Dome Camera
- Installation Guide/CD
- Template Sheet
- Mounting Bracket
- Safety Lanyard
- Mounting screws (PH6x35.0) x4
- Plastic anchors x4
- O-Rings x4
- Torx wrench
- 3-pin terminal block
- 6-pin terminal block
- RJ-45 Waterproof Cover

## Installation

### Installation

The dome camera is for use in surface or pendent mounting applications, and the mounting member must be capable of supporting loads of up to 4.5 kg. (Pendent mounting must use pendent mount accessory.)

The dome camera's mounting bracket should be attached to a structural object, such as hard wood, wall stud or ceiling rafter that supports the weight of the dome camera.

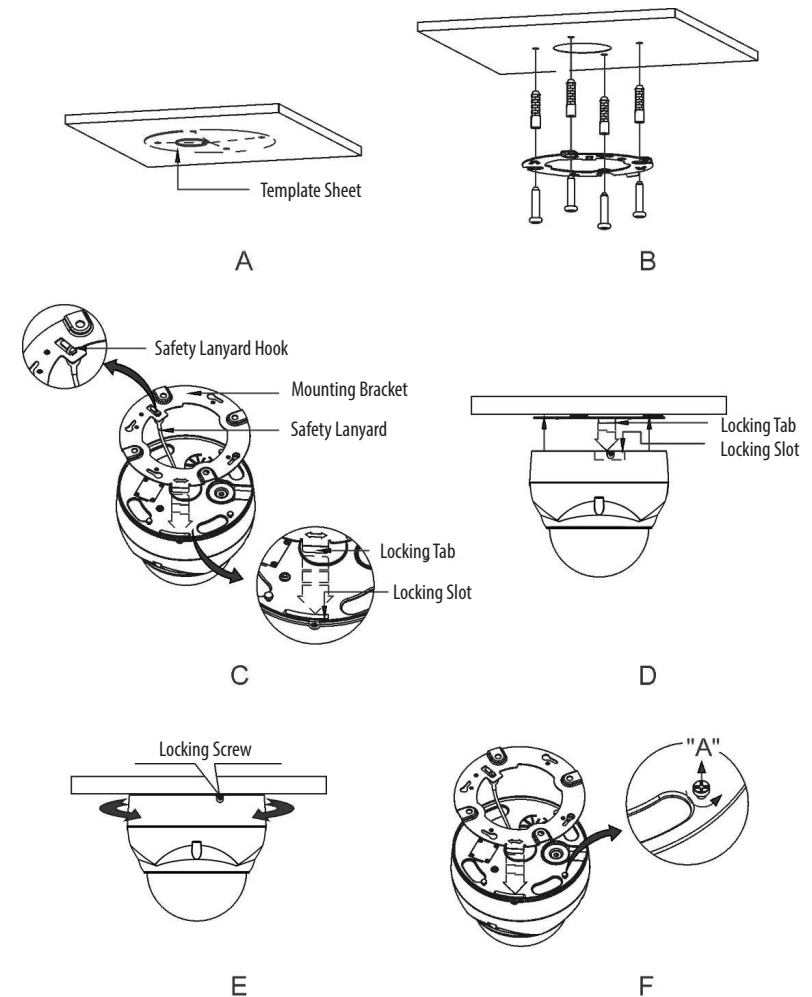


**CAUTION:** A silicone rubber sealant must be applied to seal the housing to secure water-proofing.

### Locking Dome Camera

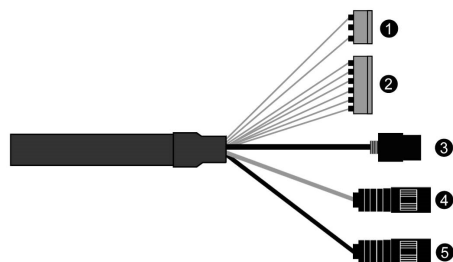
1. Make screw holes on the ceiling using the supplied mounting Template Sheet (Figure A).

2. Fix the Mounting Bracket to the ceiling using supplied Anchors (4x) and Mounting Screws (4x) (Figure B).
3. Hook up the Safety Lanyard to the Safety Lanyard Hook of the Mounting Bracket (Figure C).
4. Align the locking tab on the bracket and the locking slot on the base of the dome (Figure D).
5. Turn the dome to the counterclockwise about 10 degree to the locked position (Figure E).



**CAUTION:** Before installing mounting bracket to surface pre-adjust the four mounting screws "A" on the base of the dome camera to best match the mounting bracket locked position. Unscrew the locking screw on the side of the dome's base and fit the tab of the mounting bracket into the locking slot. Screws "A" should not be too tight or too loose when the dome is in the locked position. After setting the proper positions of screws "A" remove the mounting bracket and install it to the proper surface. If it is too difficult to lock the dome in position after the mounting bracket has been installed readjust the screws "A" by unscrewing them a small amount and try to install dome camera again.

### Basic Configuration of Camera System



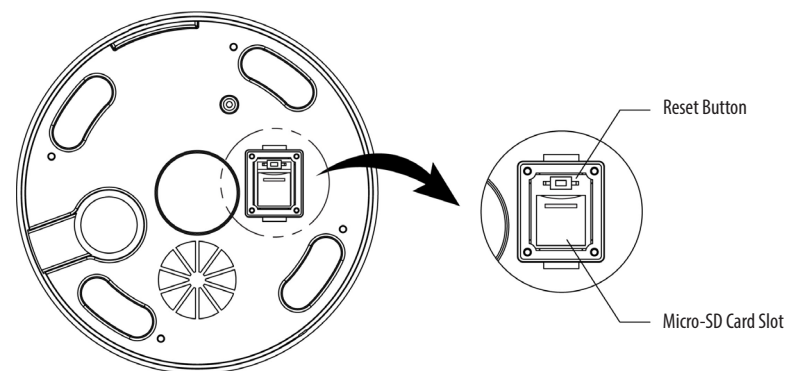
No.	Connector	Wire Color	Description
1	3-pin terminal block	RED	24VAC or 12VDC+
		WHITE	24VAC or 12VDC-
2	6-pin terminal block	PINK	ALARM INPUT 1
		GRAY	ALARM INPUT 2
		GREEN	ALARM INPUT 3
		BLUE	ALARM INPUT 4
		BROWN	GND
	YELLOW	ALARM OUTPUT	
3	RJ-45	BLACK	Ethernet, RJ-45 port compatible with 10/100Mbps having PoE functionality
4	Stereo jack	GRAY	AUDIO OUTPUT
5	Stereo jack	BLACK	AUDIO INPUT

The camera must be installed by qualified service personnel in accordance with all local and federal electrical and building codes.

### Micro-SD Card Insertion

User can install and change Micro-SD card as shown in the following picture.

1. Open the Micro-SD card cover.
2. Install or change Micro-SD card.
3. Tightly close the Micro-SD card cover to ensure waterproofness.



### Connections

#### Connecting the Network

Connect a standard RJ-45 cable to the network port of the camera. Generally a crossover cable is used for directly connection to PC, while a direct cable is used for connection to a hub.

#### Connecting Audio

Connect speaker to audio output line and external mic to audio input line.

## Connecting Alarms

### A1,A2,A3,A4 (Alarm Input 1,2,3,4)

You can use external devices to signal the dome camera to react on events. Mechanical or electrical switches can be wired to the A1,A2,A3,A4 (Alarm Input 1,2,3,4) and G (Ground) connectors.

See *Program and Operation* for configuring alarm input.

### G (Ground)

**NOTICE:** All the connectors marked G or GND are common.

Connect the ground side of the alarm input and/or alarm output to the G (Ground) connector.

### AO (Alarm Output)

The dome camera can activate external devices such as buzzers or lights. Connect the device to the AO (Alarm Output) and G (Ground) connectors.

See *Program and Operation* for configuring alarm output.

## Connecting the Power

Connect power of 12VDC or 24VAC for the dome camera.

When using a 12VDC adapter, connect the positive (+) pole to the '+' position and the negative (-) pole to the '-' position.

Use satisfy clause 2.5 of IEC60950-1/UL60950-1 or Certified/Listed Class 2 power source only.

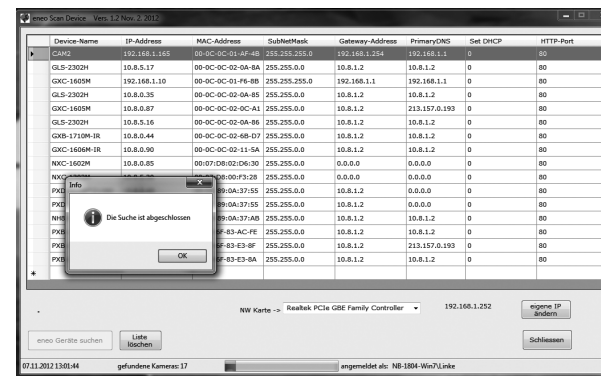


### CAUTION:

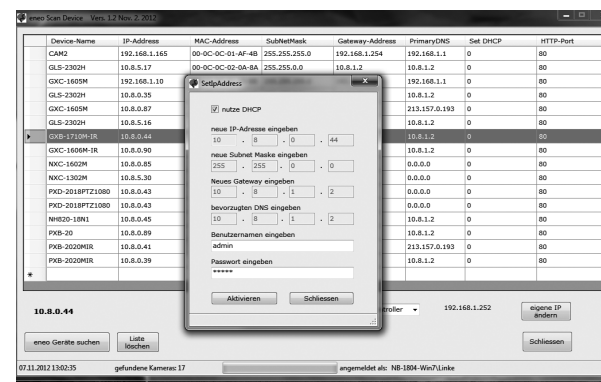
- Be careful not to reverse the polarity when you connect the power cable.
- You can also use a router featuring PoE (Power over Ethernet) to supply power to the camera.
- 24VAC is recommended to use for the camera power for stable operation with heater kit. **If using PoE, the heater will not operate at all!**

## Network Connection & IP Assignment

The eneo scanning device tool is used to locate all eneo network cameras in a local network. The tool does not need to be installed with a setup program. The program exe-file can be started directly from the CD with a simple double click to use the program.



After pushing the button „Find eneo devices“ you will get a list of cameras connected to the local network. Highlight your camera in the list and open a context menu with a click of the right mouse button.



Select the „Editing the camera IP address“ option to open a window for setting the cameras IP properties. When you are done click the „Activate“ button to update the camera settings.

For further information, please refer to the eneo Scan Device Tool Quick Start Guide.

## Operation

The network camera can be used with Windows operating system and browsers. The recommended browsers are Internet Explorer, Safari, Firefox, Opera and Google Chrome with Windows.

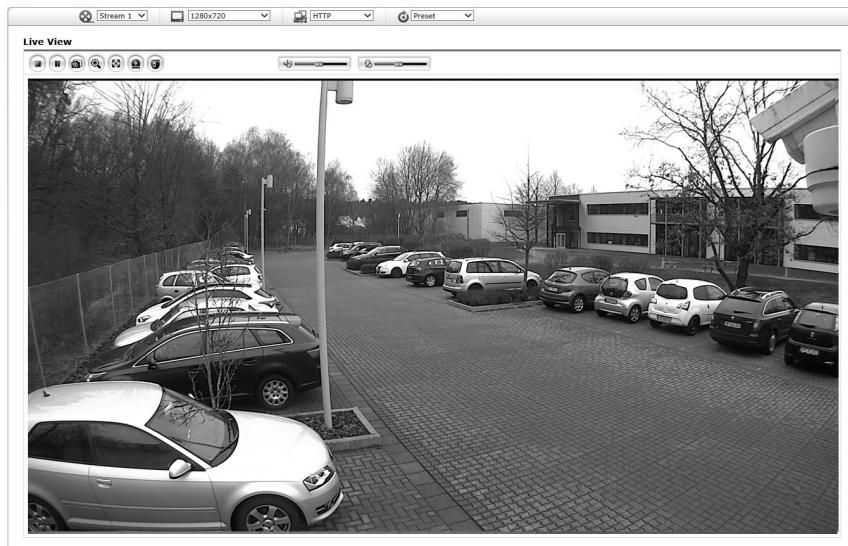
**i Notice:** To view streaming video in Microsoft Internet Explorer, set your browser to allow ActiveX controls.

## Access from a browser

1. Start a browser (Internet Explorer).
2. Enter the IP address or host name of the network camera in the Location/Address field of your browser.
3. You can see a starting page. Click **Live View**, **Playback**, or **Setup** to enter web page.



4. The network cameras **Live View** page appears in your browser.



## Access from the internet

Once connected, the network camera is accessible on your local network (LAN). To access the network camera from the Internet you must configure your broadband router to allow incoming data traffic to the network camera. To do this, enable the NAT traversal feature, which will attempt to automatically configure the router to allow access to the network camera. This is enabled from Setup > System > Network > NAT. For more information, please see "System > Network > NAT" of User's Manual.

## Setting the admin password over a secure connection

To gain access to the product, the password for the default administrator user must be set. This is done in the Admin Password dialog, which is displayed when the network camera is accessed for the setup at the first time. Enter your admin name and password, set by the administrator.



**i Notice:** The default administrator user name and password is admin. If the password is lost, the network camera must be reset to the factory default settings. Please see "Resetting to the factory default settings".

To prevent network eavesdropping when setting the admin password, this can be done via an encrypted HTTPS connection, which requires an HTTPS certificate (see Notice below). To set the password via a standard HTTP connection, enter it directly in the first dialog shown above. To set the password via an encrypted HTTPS connection, please see System > Security > HTTPS of User's Manual.

**i Notice:** HTTPS (Hypertext Transfer Protocol over SSL) is a protocol used to encrypt the traffic between web browsers and servers. The HTTPS certificate controls the encrypted exchange of information.

## Live View Page

The Live View page comes in several screen modes: 1920x1080, 1280x1024, 1280x720(960), 1024x768, 704x480(576), 640x480(360) and 320x240. Users are allowed to select the most suitable one out of those modes. Adjust the mode in accordance with your PC specifications and monitoring purposes.



## General controls

Live View Page
 Playback Page
 Setup Page
 Help Page

Stream 1 The video drop-down list allows you to select a customized or pre-programmed video stream on the Live View page. Stream profiles are configured under Setup > Basic Configuration > Video & Image. For more information, please see "Basic Configuration > Video & Image" of Users Manual.

1920x1080 The resolution drop-down list allows you to select the most suitable one out of video resolutions to be displayed on Live View page.

HTTP The protocol drop-down list allows you to select which combination of protocols and methods to use depending on your viewing requirements, and on the properties of your network.

Preset The preset drop-down list allows you to select the preset number for the PTZ camera being used. This icon is inactivated if the PTZ settings are not set.

## Control toolbar

The live viewer toolbar is available in the web browser page only. It displays the following buttons:

- The **Stop** button stops the video stream being played. Pressing the key again toggles the start and stop.
- The **Play** button connects to the network camera or starts playing a video stream.
- The **Pause** button pauses the video stream being played.

The **Snapshot** button takes a snapshot of the current image. The location where the image is saved can be specified.

The **Digital Zoom** button activates a zoom-in or zoom-out function for video image on the live screen.

The **Full Screen** button causes the video image to fill the entire screen area. No other windows will be visible. Press the 'Esc' button on the computer keyboard to cancel full screen view.

The **Manual Trigger** button activates a pop-up window to manually start or stop the event.

The **PTZ** button activates a pop-up window for Pan, Tilt and Zoom control.

The **VCA** button shows/hides VCA rule setting and detected objects.

The **Face Detection** button shows/hides detected faces.

The **Speaker** button activates/deactivates external speaker.

The **Mic** button activates/deactivates microphone input.

Use this scale to control the volume of the speakers and microphones.

**Notice:** VCA and Face Detection buttons appear only when each function is activated.

**Notice:** VCA and Face Detection works exclusively to each other.

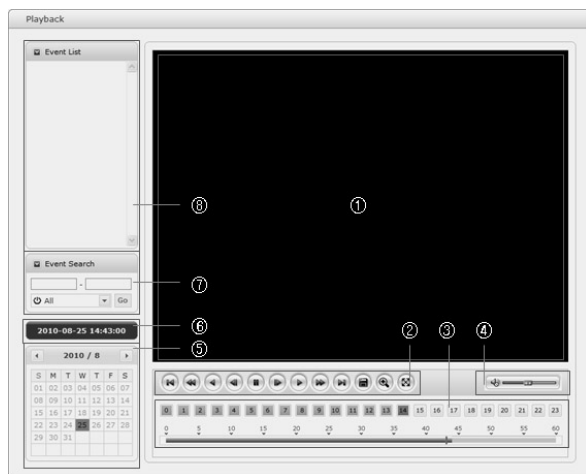
## Video Streams

The network camera provides several images and video stream formats. Your requirements and the properties of your network will determine the type you use.

The Live View page in the network camera provides access to H.264 and Motion JPEG video streams, and to the list of available video streams. Other applications and clients can also access these video streams/images directly, without going via the Live View page.



## Playback



The Playback window contains a list of recordings made to the memory card. It shows each recording's start time, length, the event type used to start the recording, calendar and time slice bar indicates if the recording is existed or not.

The description of playback window follows.

### ① Video Screen

You can see the video screen when playing the video clip in the Micro SD memory.

### ② Playback Buttons

To view a recording data in the SD local storage, select it from the list and click the Playback buttons.

- ① Go to the first: go to the beginning of the video clip.
- ② Fast backward play: fast play backward of the video clip.
- ③ Backward play: play backward of the video clip.
- ④ Step backward play: go back one frame of the video clip.
- ⑤ Pause: pause playback of the video clip.
- ⑥ Step forward play: go forward one frame of the video clip.

- ⑦ Forward Play: play forward the video clip.
- ⑧ Fast forward play: play fast forward of the video clip.
- ⑨ Go to the last: go to the end of the video clip.
- ⑩ Clip copy: copy the video clip.
- ⑪ Zoom In: zoom in the video clip.
- ⑫ Full Screen: display full screen of the video.

### ③ Time Chart

Display an hour-based search screen for the chosen date. If there is recording data, a blue section will be displayed on a 24-hour basis. If you select a particular hour in the chart, a yellow square on the hour will be displayed.

### ④ Speaker Control Bar

Use this scale to control the volume of the speakers.

### ⑤ Search Calendar

Search results from the SD local storage in the network camera connected are displayed monthly. If there is a recorded data for a particular date, a blue square on the date will be displayed. If you select a particular date in the calendar, a yellow square on the date will be displayed.

### ⑥ Play Time

Displays time of the video playing.

### ⑦ Event Search Window

Select a search option in the drop-down list and click GO button. You can also enter the time period for searching. If you click Start Date or End Date zone, displays Search Calendar.



### ⑧ Event List Window

Event List displays the event(s) that were recorded in the SD local storage. Select a list and click the play button. The video clip will be played.

## Network Camera Setup

This section describes how to configure the network camera.

Administrator has unrestricted access to all the Setup tools, whereas Operators have access to the settings of Basic Configuration, which are Live View, Video & Image, Audio, Event, Dome Configuration, and System.

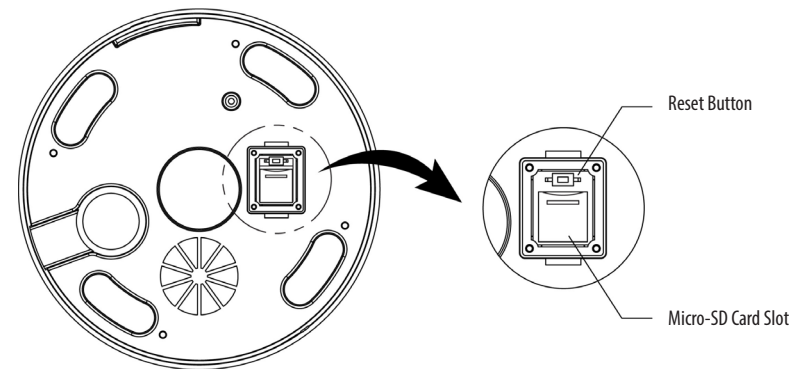
You can configure the network camera by clicking Setup either in the first connection page or the top second-right button of the Live View page. Accessing the network camera from a computer for the first time opens the Admin Password dialog box. Enter your administrator or operator id and password to get into setup page.



**i Notice:** If the password is lost, the network camera must be reset to the factory default settings. Please see "Resetting to the factory default setting".

## Resetting to the factory default settings

To reset the network camera to the original factory settings, go to the Setup > System > Maintenance web page (described in "System > Maintenance" of Users Manual) or use the Reset button on the network camera, as described below:



### Using the Reset button:

Follow the instructions below to reset the network camera to the factory default settings using the Reset button.

1. Switch off the network camera by disconnecting the power adapter.
2. Open the Micro-SD card cover.
3. Press and hold the Reset button (SW1) on the board with your finger while reconnecting the power.
4. Keep the Reset button (SW1) pressed for about 2 seconds.
5. Release the Reset button (SW1).
6. The network camera resets to factory defaults and restarts after completing the factory reset.
7. Tightly close the Micro-SD card cover to ensure waterproofness.

**CAUTION:** When performing a Factory Reset, you will lose any settings that have been saved. (Default IP 192.168.1.10)

### Further information

Make sure to always upgrade to the latest firmware version available from the eneo website at [www.eneo-security.com](http://www.eneo-security.com) to receive the latest functionality for your product.

The manual, and other software tools are available on the eneo website at [www.eneo-security.com](http://www.eneo-security.com) or on the included CD.

Information on compatible video management software solutions can be found in the category ***Videomanagement*** at [www.eneo-security.com](http://www.eneo-security.com).





eneo® is a registered trademark of  
VIDEOR E. Hartig GmbH  
Exclusive distribution through specialised  
trade channels only.

VIDEOR E. Hartig GmbH  
Carl-Zeiss-Straße 8  
63322 Rödermark/Germany  
Tel. +49 (0) 6074 / 888-0  
Fax +49 (0) 6074 / 888-100  
[www.videor.com](http://www.videor.com)  
[www.eneo-security.com](http://www.eneo-security.com)

Technical changes reserved

© Copyright by VIDEOR E. Hartig GmbH  
Version 07/2016