

# Wall Mount Bracket for Vandalproof dome

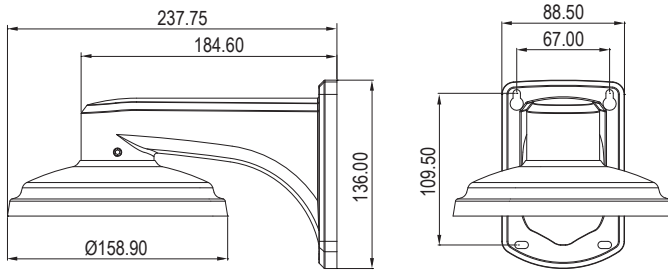
## INSTALLATION GUIDE



### PRIOR to USE

Install the mount onto a strong structure such as concrete wall.  
Use the supplied accessories when installing the mount bracket depends on mounting position.

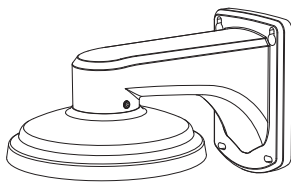
### DIMENSION (unit: mm)



### SPECIFICATION

Construction: Aluminum cast  
Environment: Wall mount for a Vandalproof dome  
Dimension(mm): Ø158.90(W)x136(H)x237.75(L)  
Weight: 900g (1.98 lb)

### PARTS SUPPLIED



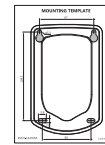
**Wall Mount Bracket**



**Bracket Ring**



**Bracket Pad**



**Mounting Template**



**Installation Guide**



**Assembly Screw**  
M4x11mm (Q'ty:4)



**Mounting Screw**  
BA4x30mm (Q'ty:4)



**Plastic Anchor**  
6x30mm (Q'ty:4)



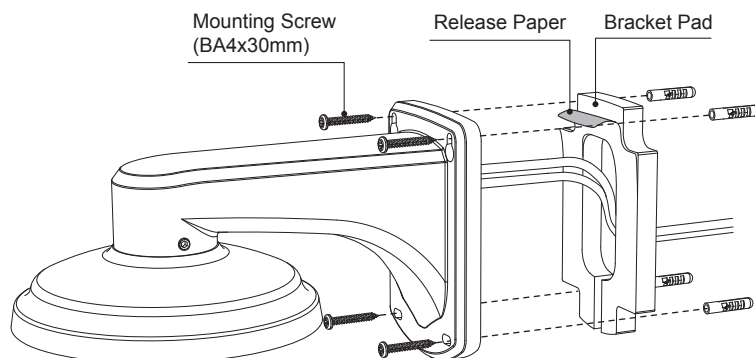
**L-Wrench**  
3mm (Q'ty:1)



**Trox Wrench**  
T20 (Q'ty:1)

### INSTALLATION

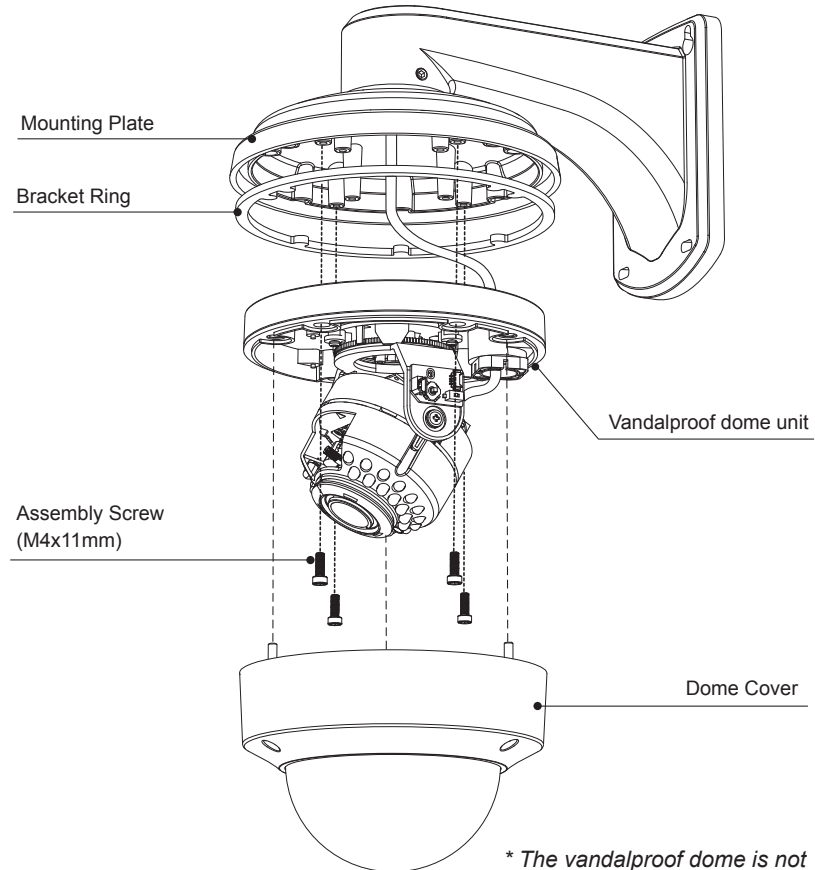
1. Locate the mounting template at the installation position and drill the wall.
2. Remove the release paper of bracket pad and attach to rear plate of the bracket.
3. Route the power and BNC cables through the bracket.
4. Place the mount bracket on pre-drilled position and fix it through using mounting screws.



## INSTALLATION

---

5. Insert the bracket ring to the mounting plate for waterproofing.
6. Open the dome cover by loosening screws.
7. Connect the power and BNC cables with the camera cables.
8. Assemble the vandalproof dome unit to the mounting plate using the assembly screws (M4x11mm).
9. Set the camera's viewing angle.
10. Put the dome cover to the dome unit and tighten screws.



*\* The vandalproof dome is not included in this package.*