



Manual

Client Management Software

HDR_MER_CMS

HDR_MER_CMS (Client Management Software)

1. Install HDR_MER_CMS for Windows PC

The HDR_MER_CMS is a program for communication between DVR and PC to control signal and video.

Insert the enclosed CD, and go to CD-ROM Drive and operate installer file, HDR_MER_CMS Installer 32(64).msi, to operate the installer program.

After installation, a folder will be created on the program menu of windows.

HDR_MER_CMS is possible to change setting up, playing a live video and searching a file of DVR to connect DVR and PC with LAN.

This program is supporting for Windows 7(32, 64bit) and 8(32, 64bit).

Client PC's CPU and VGA affect absolutely in work of HDR_MER_CMS.

You have to use verified VGA because it affects other parts.

※ Provided CMS Software can occur Windows errors, if you use HDR_MER_CMS with any other application since large amounts of data over the network transmitting and receiving. In particular, the Live and playback functions may not work smoothly while you are running the system monitors and internet surveillance like antivirus programs.

▶ System Requirements

- CPU : intel core i7 processor or better
- RAM : 8GB or more
- LAN : support network adapters 100Mbps or better

If there are many connected channels more and more in case of Favorite, CPU share will be more occupied.

▶ Available VGA

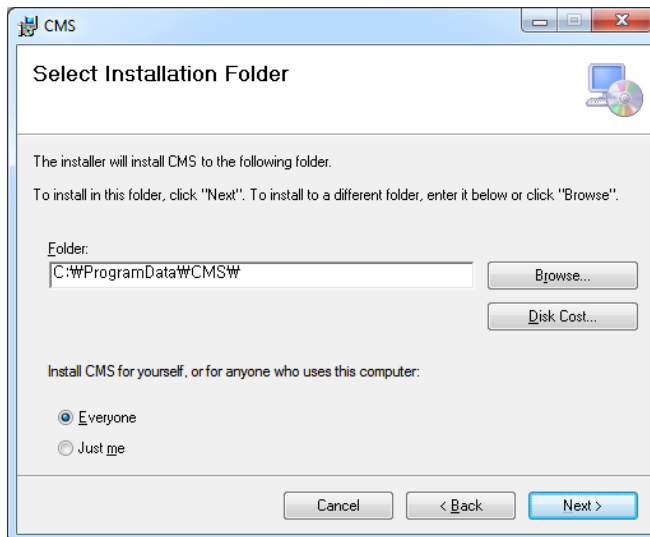
- Video Cards that support OpenGL 2.0
- Support for DirectX 9.0 or higher
- Support for 1280X720~1920X1080

If you use the lower chipset(S3, Trident and so on) of specification, HDR_MER_CMS program will make error or do not work. It can be played only with true color(32 bit). It cannot be played with high color(16 bit) and 256 color.

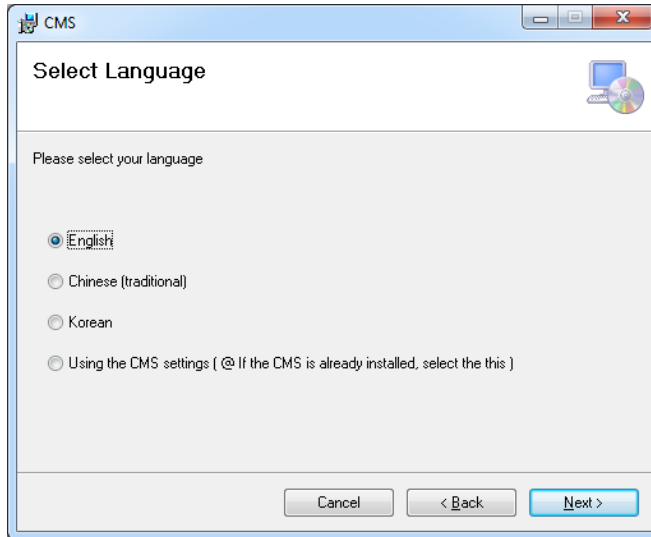
1. Insert the enclosed CD, and go to CD-ROM Drive and operate installer file, HDR_MER_CMS Installer 32(64).msi, to operate the installer program.



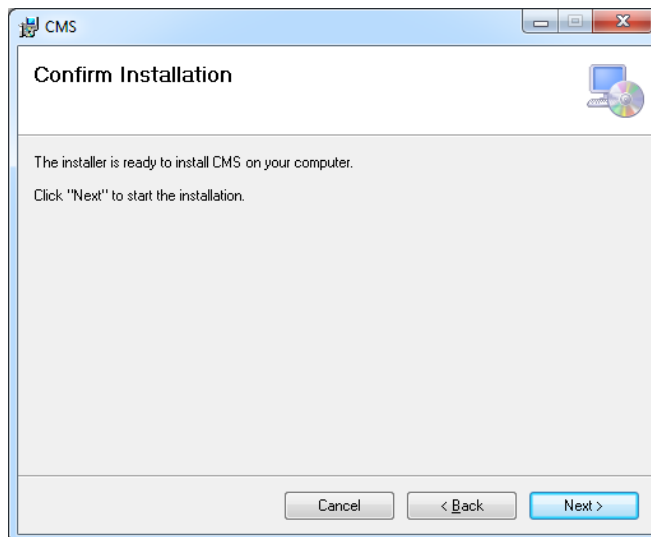
2. Click the Next for installation. If you don't choose a directory to install program, it will be located at C:\ProgramData\HDR_MER_CMS.



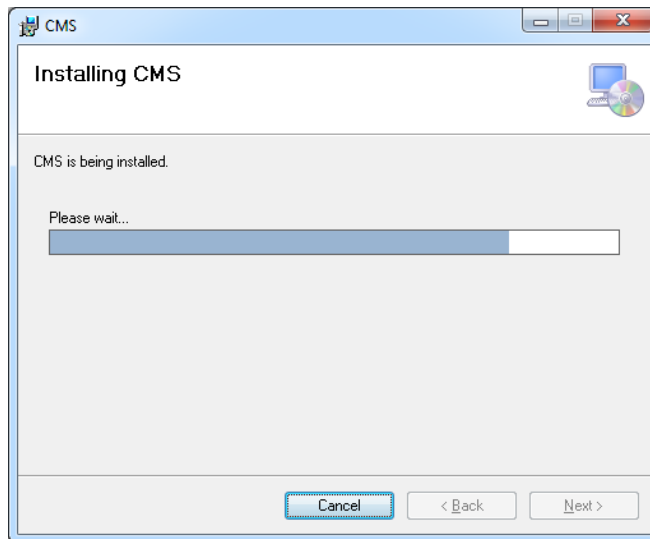
3. Select your language and click the Next for installation.



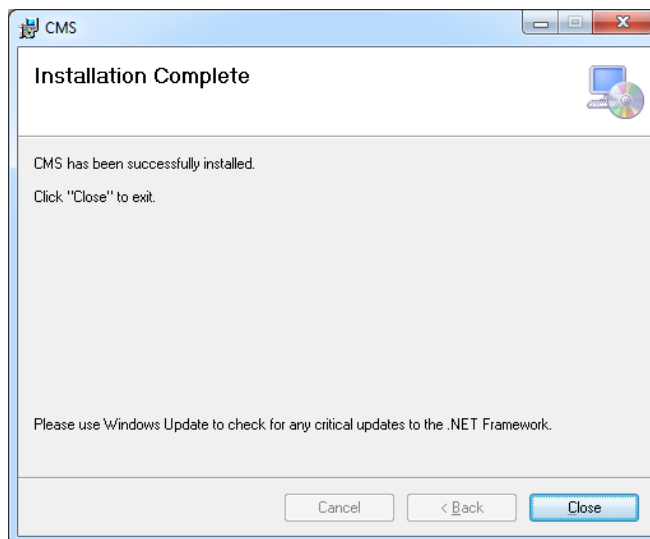
4. When HDR_MER_CMS installation program is processing, you can see the message that HDR_MER_CMS is being installed on the screen.



5. Click the Close after done with all installation tasks.



6. HDR_MER_CMS installation is completed.

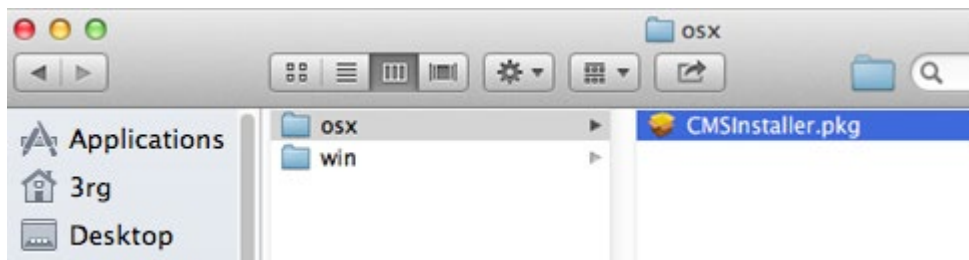


2. Mac HDR_MER_CMS Installation

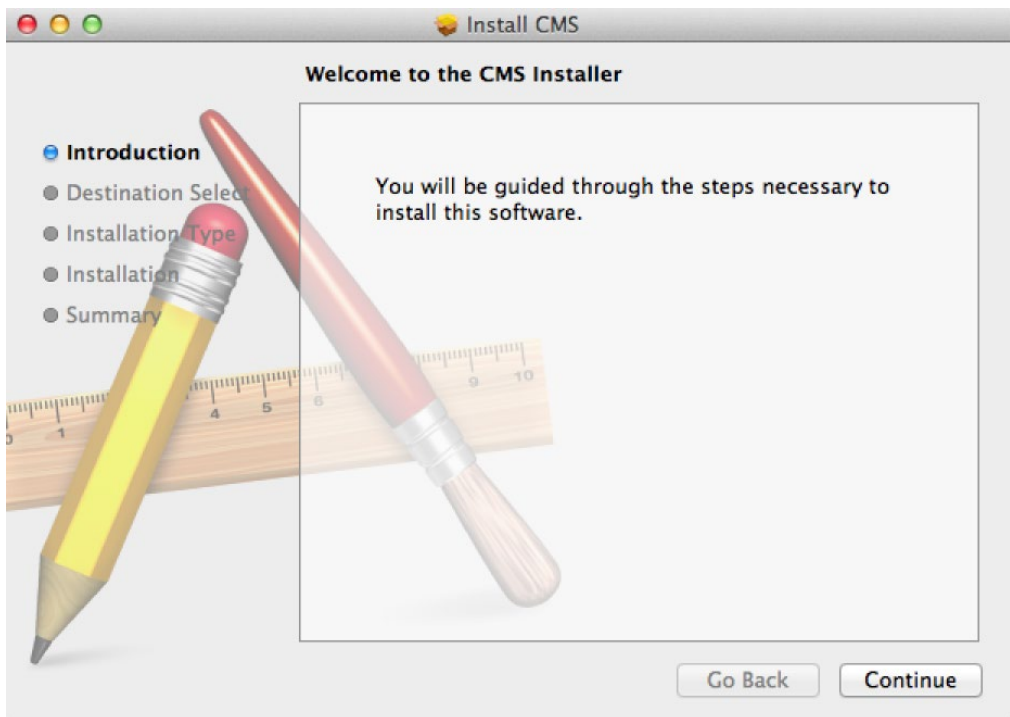
This HDR_MER_CMS supports Mac OS X 10.6.8 or later.

For the first installation, you have to log in your Mac with an administrator account. If you log in with other account, it would be not installed t

1. Insert the enclosed CD and double click HDR_MER_CMSInstaller.pkg. HDR_MER_CMS installer program is operated.



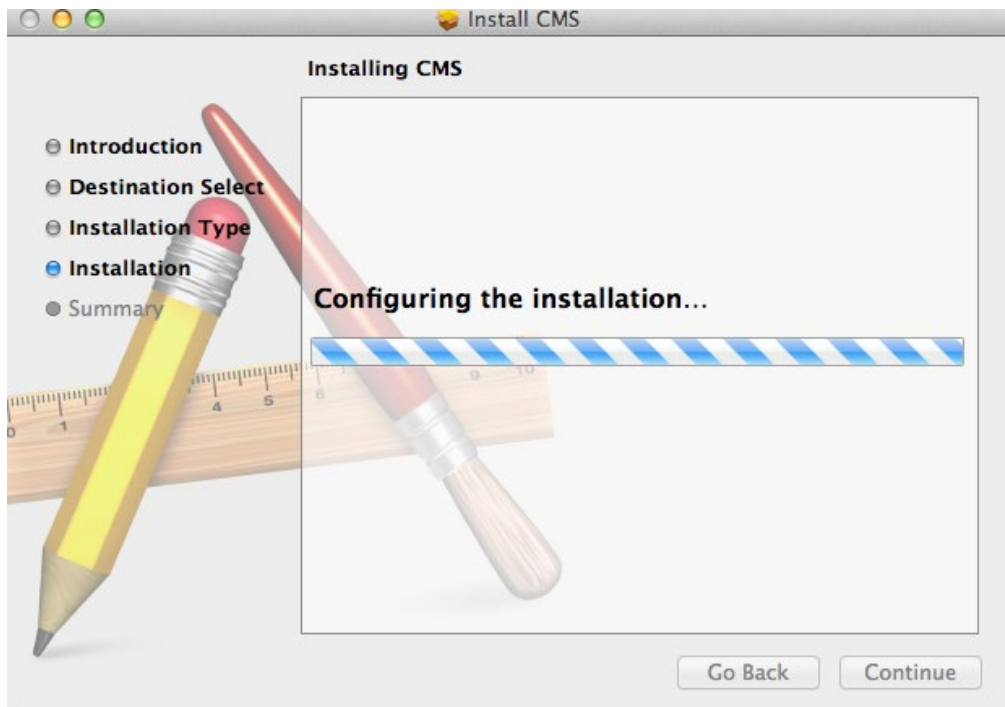
2. Click Continue for installation.



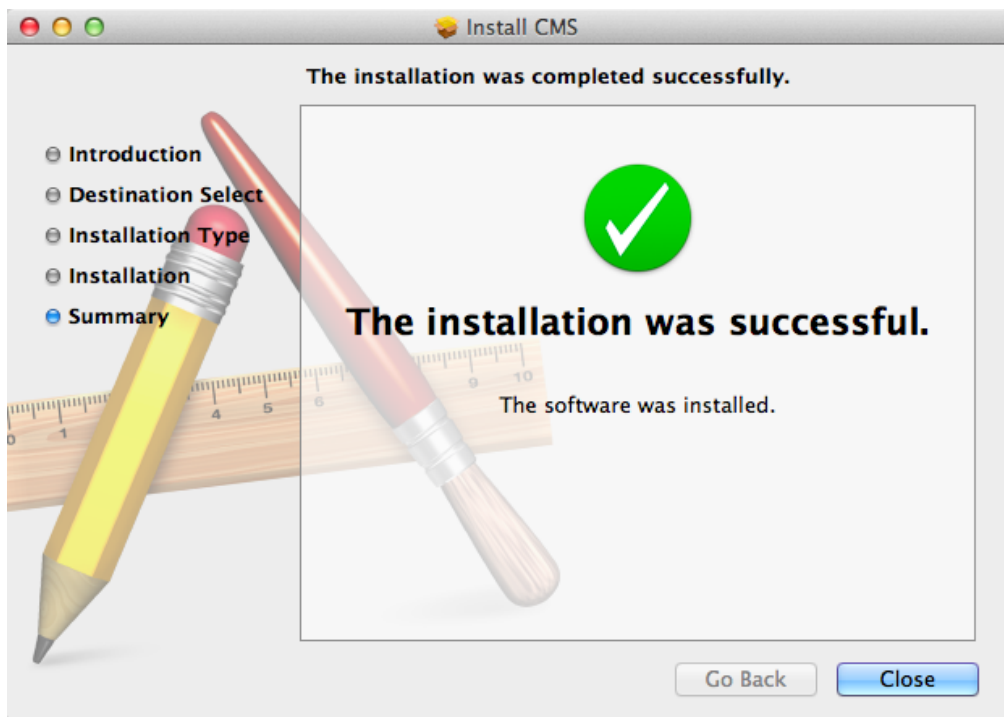
3. Type your password to install HDR_MER_CMS program.



4. Configuring the installation.



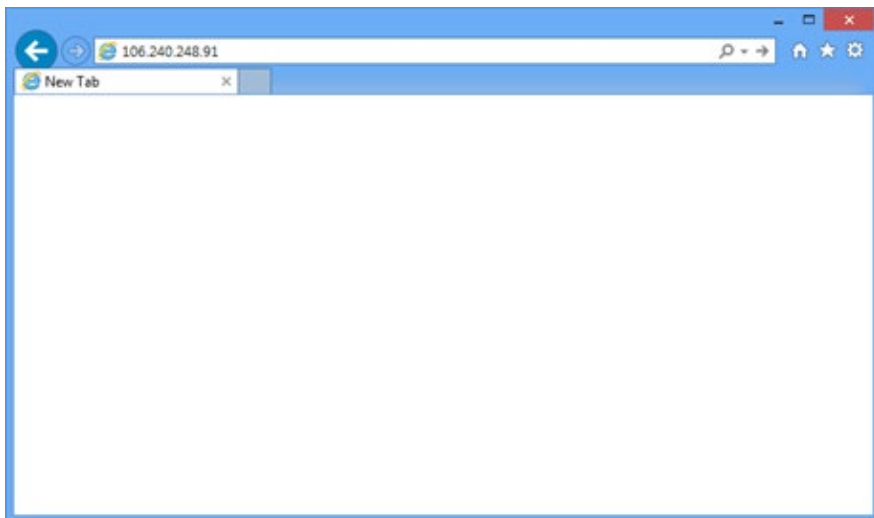
5. After the installation, click the close button.



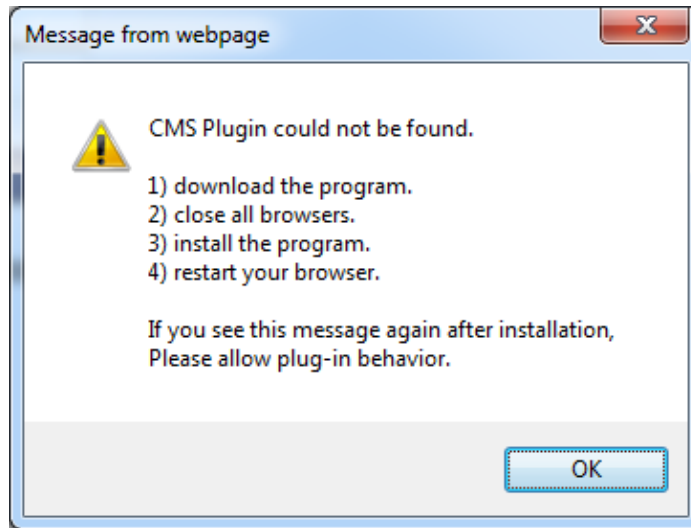
3. HDR_MER_CMS Web installation (CMS for windows)

HDR_MER_CMS web is a client program using web browser. It supports IE8 or higher.

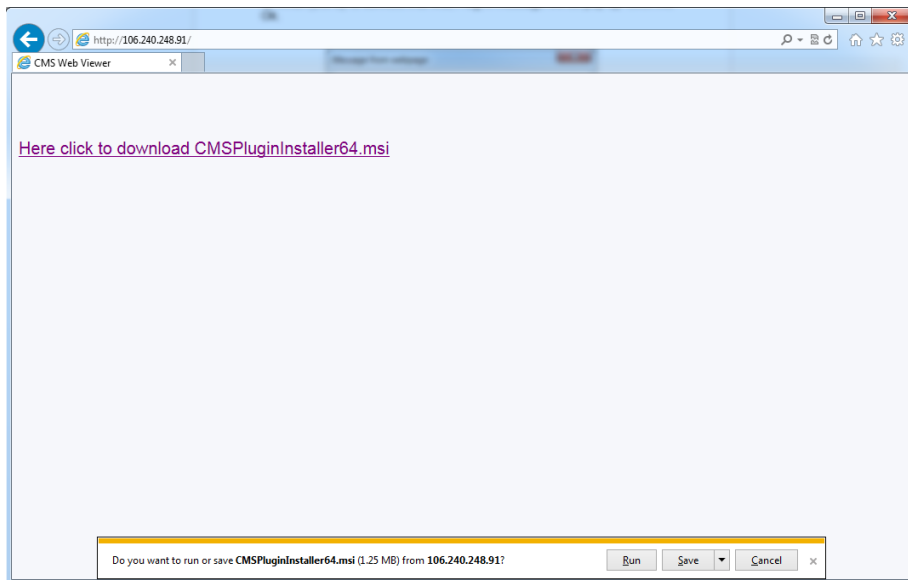
1. Open internet browser on PC
2. Type the internet address to connect the DVR you want to connect.



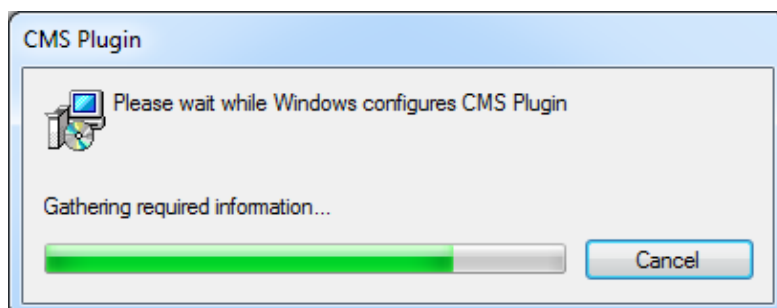
3. When you try to connect it at first, Plug-in message will be pop up. Click the Ok.



4. Click run or save to install the set up file.



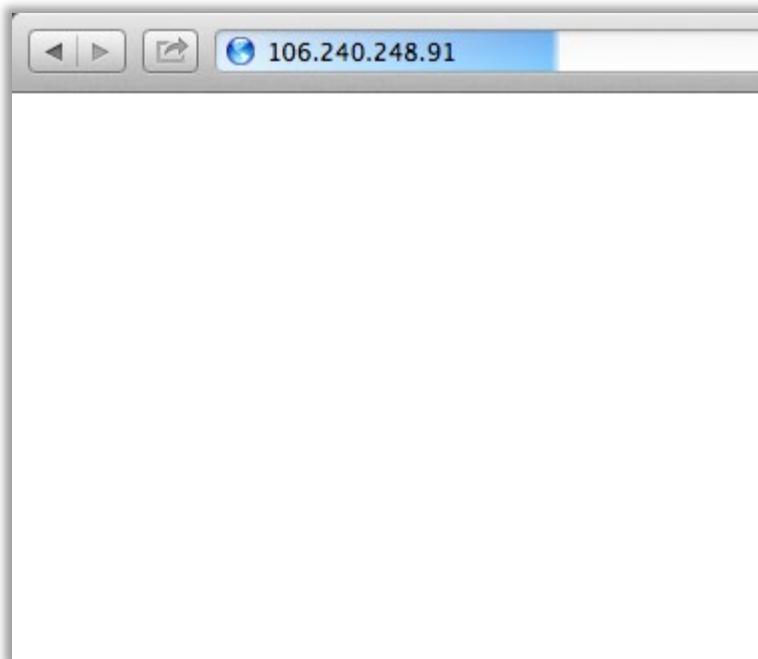
5. After done with Plug-in installation, close the internet browser and open it again.



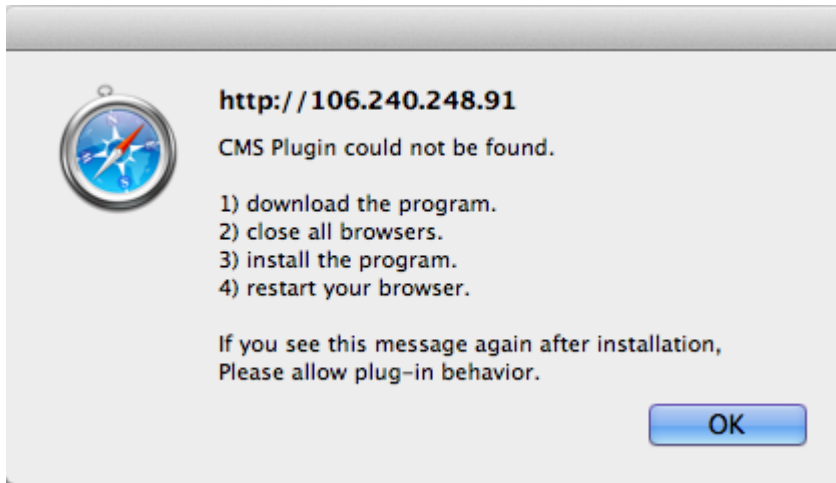
4. HDR_MER_CMS Web installation (CMS for Mac)

HDR_MER_CMS web is a client program using web browser. It supports latest versions of safari and Firefox., but it doesn't support chrome.

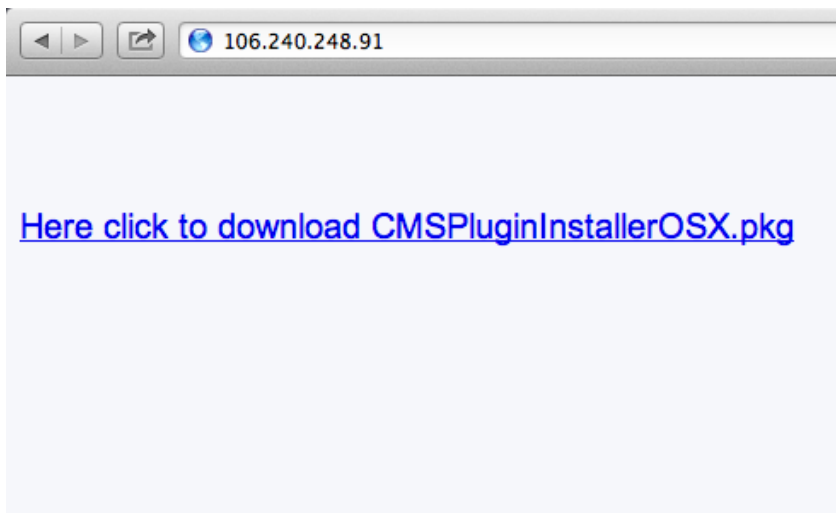
1. Open internet browser on PC
2. Type the internet address to connect the DVR you want to connect.



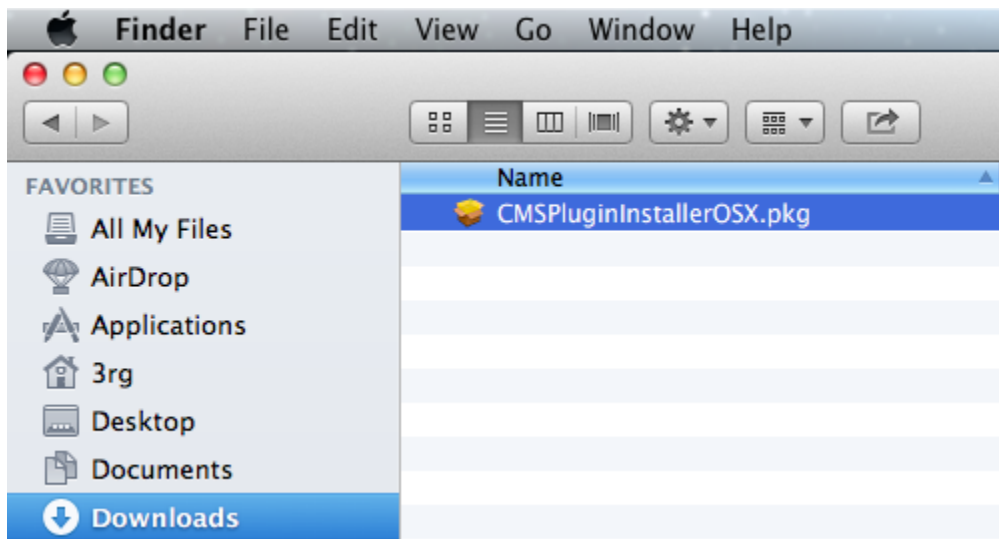
3. When you try to connect it at first, Plug-in message will be pop up. Click the Ok.



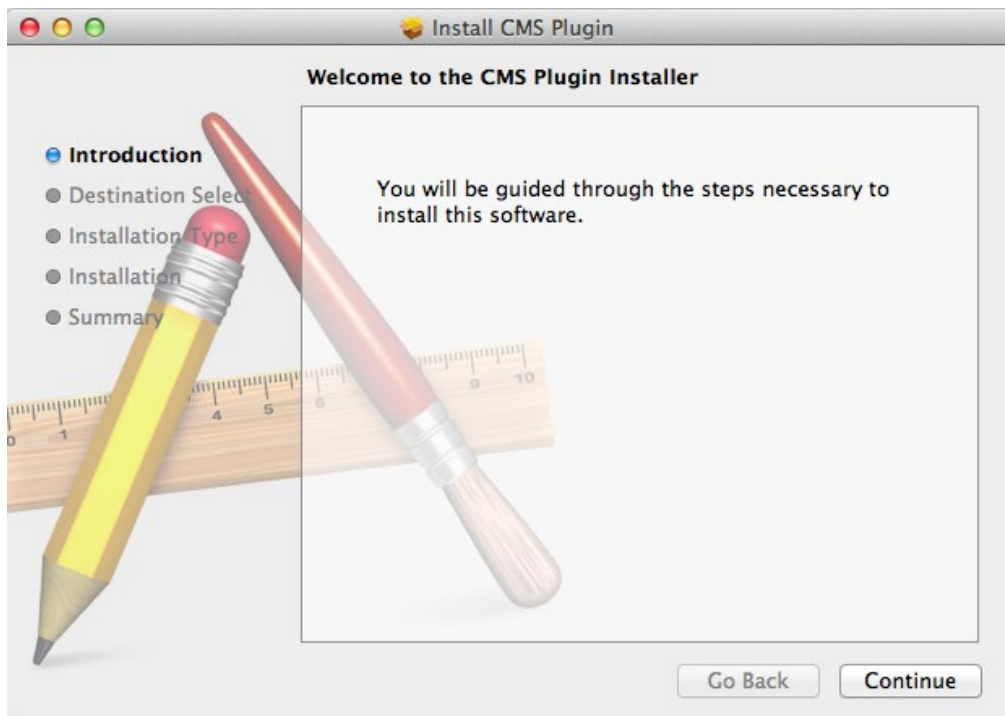
4. Click save to install the set up file.



5. Move to the path the file is downloaded from Finder. Double click the file.



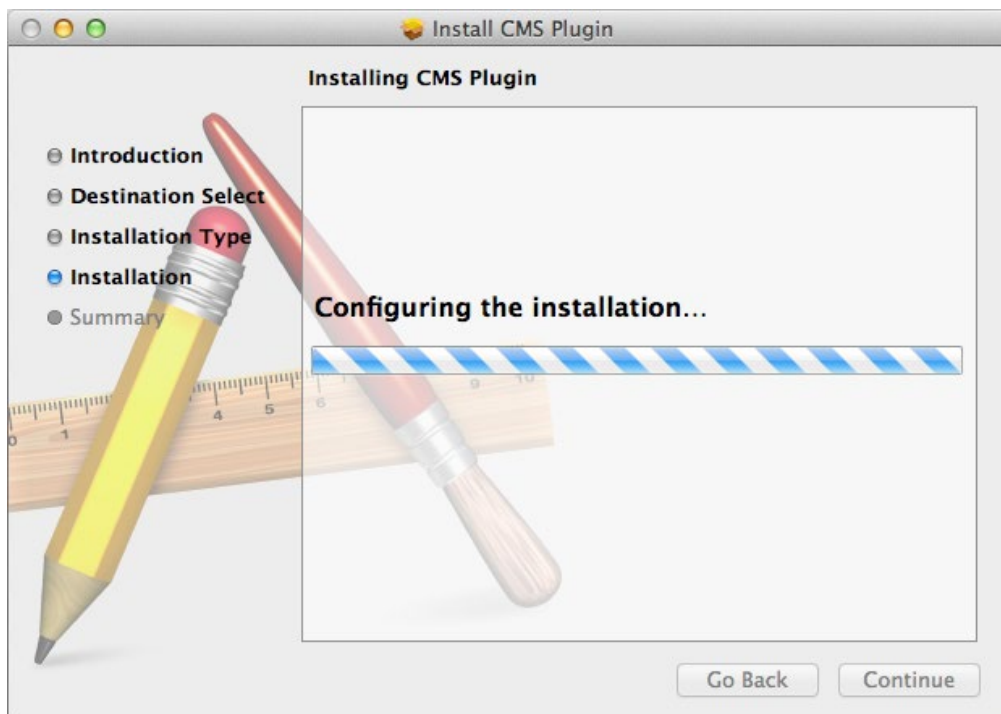
6. Click Continue for installation.



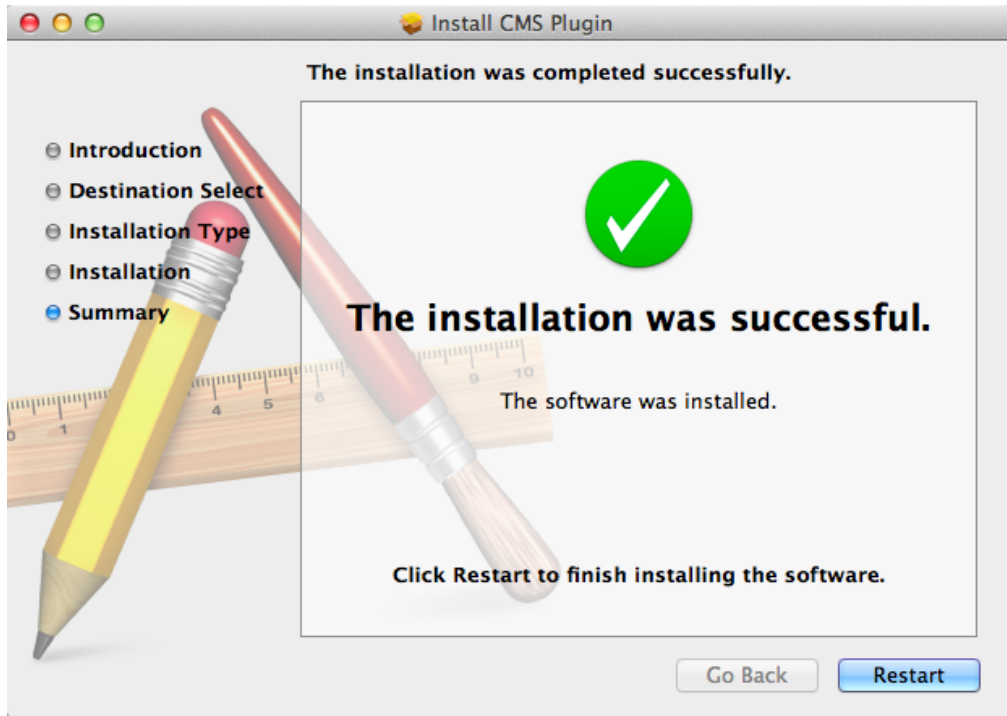
7. Type your password to install HDR_MER_CMS plug in and click Install Software.



8. Configuring the installation.



9. Click Restart to finish installing the software.

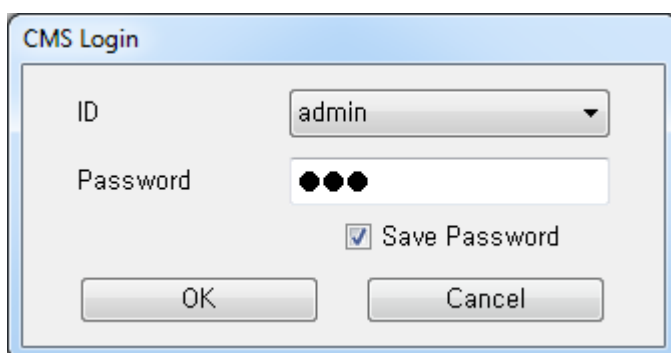


5. How to use HDR_MER_CMS

After done with HDR_MER_CMS installation tasks, it created a HDR_MER_CMS icon on the desktop. In order to run the HDR_MER_CMS, double click the icon on the desktop.

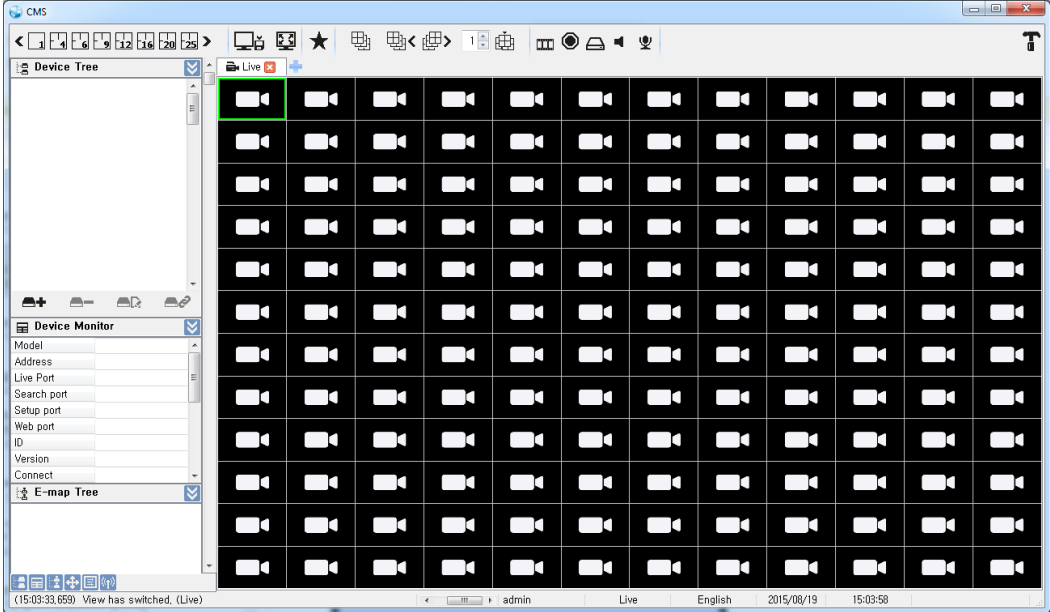


Type ID and password to log in. The default password is 333.

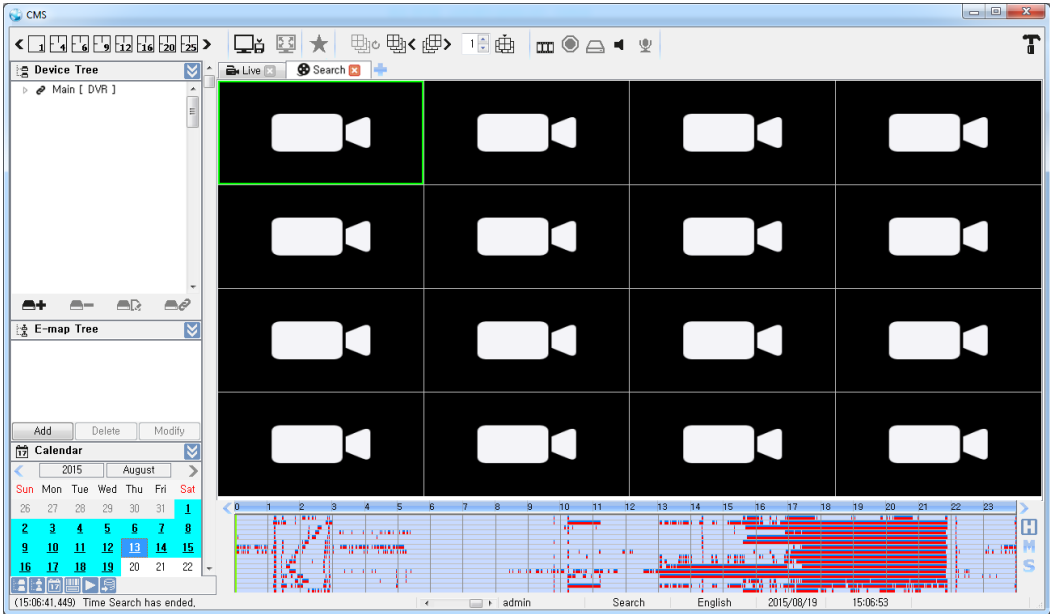
The image shows a 'CMS Login' dialog box. It has a title bar with the text 'CMS Login'. Inside the dialog, there are two input fields: 'ID' and 'Password'. The 'ID' field is a dropdown menu with 'admin' selected. The 'Password' field is a text box with three black dots representing the password. Below the password field is a checkbox labeled 'Save Password' which is checked. At the bottom of the dialog are two buttons: 'OK' and 'Cancel'.

- ❖ There is no limit the number of concurrent connections on CMS in theory. However, if there are too many concurrent connections from on HDR_MER_CMS that would be made slowly or not work.

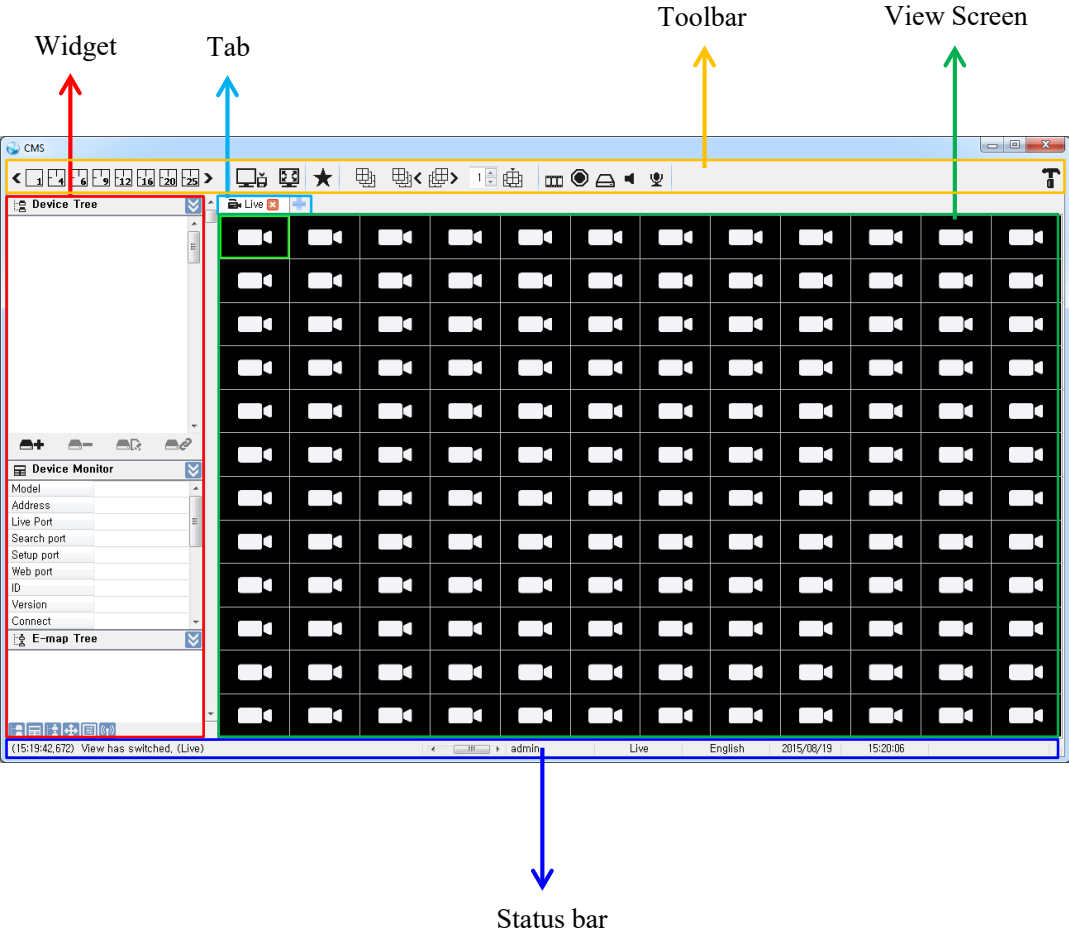
The initial screen of HDR_MER_CMS (Live view)



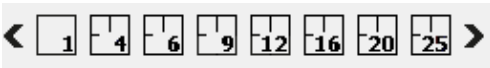
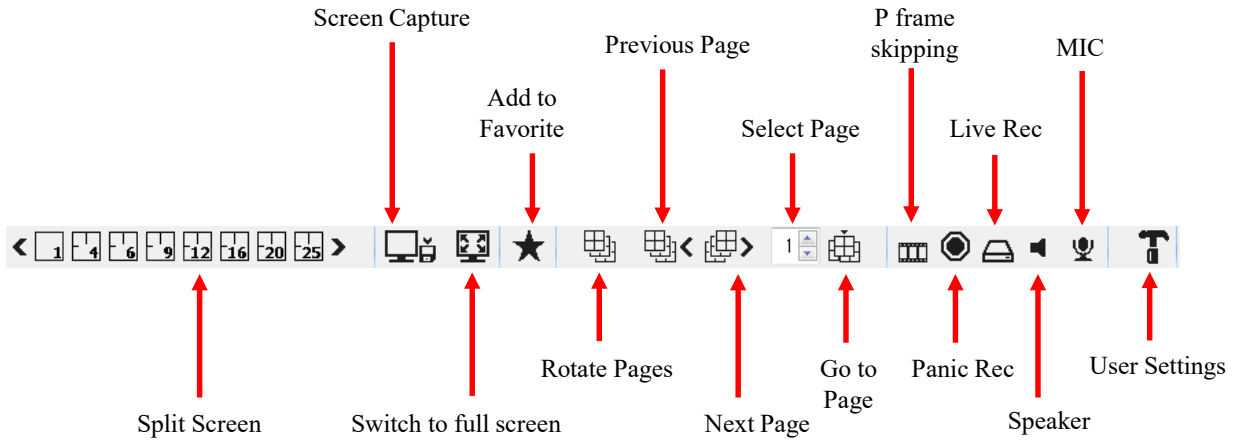
The initial screen of HDR_MER_CMS (Search view)



<HDR_MER_CMS Composition>



5.1 Tool Bar



Change Live/Search View of split mode.
(from 1 to 144)



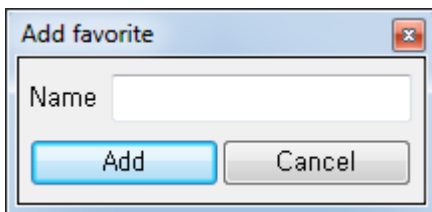
Capture a screen of the current View. It is possible to change the store folder in configuration.



Maximize the window to full screen. Press ESC to exit full screen.



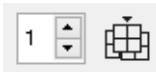
Add favorite view state of the current device.



Rotate pages the current split screen by sequence time, but only the number of current split screen has less than video channels.



Rotate pages the current split screen to click the icons, but only the number of current split screen has less than video channels.



Rotate pages the current split screen to click the number of page, but only the number of current split screen has less than video channels.



Panic Recording : Skipping P frames for improvement of search speed.



Panic Recording : manually record all channels in highest quality on the DVR. This type of recording is designed to be used in the case of emergency when something is happening.



Live Recording : manually record all channels in highest quality on the PC. This type of recording is designed to be used in the case of emergency when something is happening.



Speaker : Set listen of the selected channel. Each time you select the icon, it will set enable or disable.



MIC : Set speech of the selected channel. Each time you select the icon, it will set enable or disable.

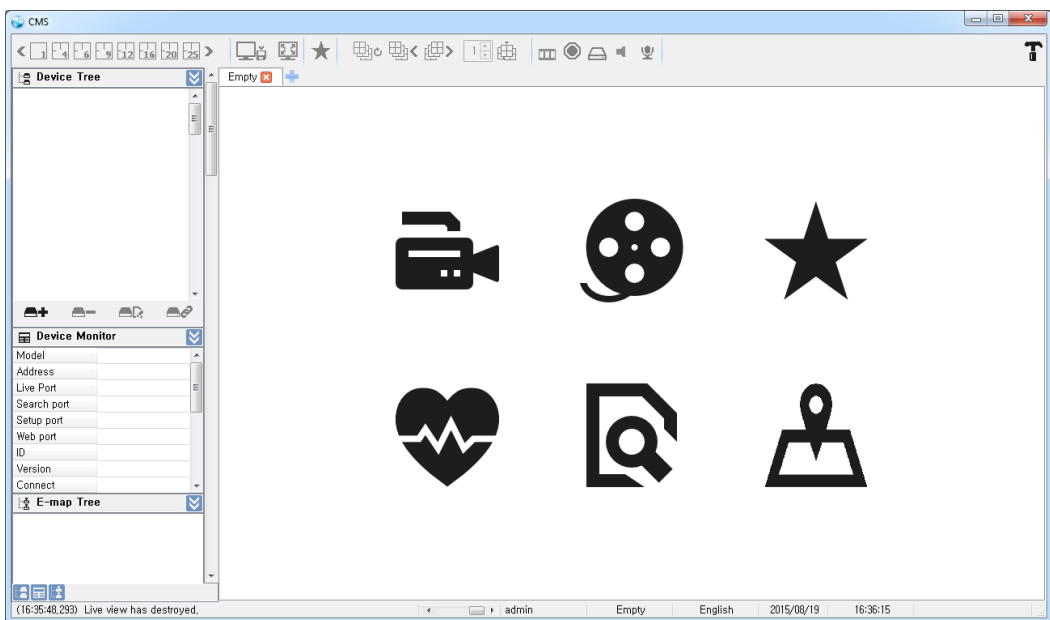
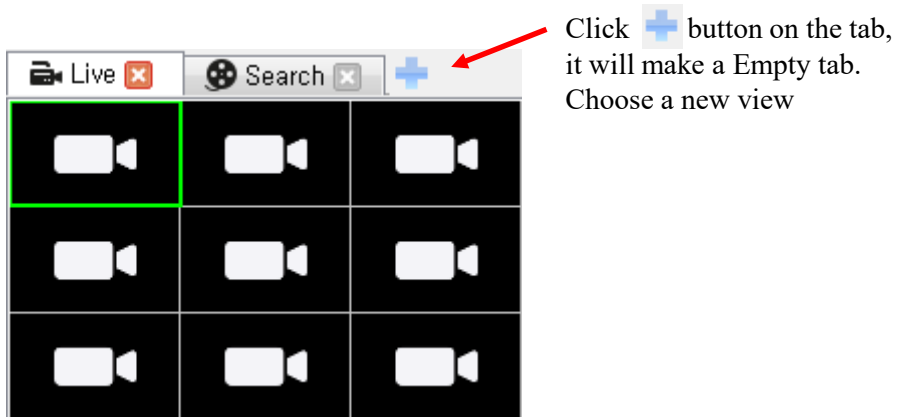


Configuration. Refer to 5.7 for detail

5.2 Tab

You can create taps for live, search, health, or E-Map.

- How to make a new tab



- Tabs



Live View : It is created when you click the icon. All the devices registered are showed up on Device Tree Widget.



Search View : Choose a device that is currently connected.



Favorite View : The screen will switch to Favorite View when you click the icon.(On Favorite View, it will switch to Empty tab that creates Live or Search tab.) A new Live view is created split screen of video and in order of video as specified by user when you click the icon.



Health View : It shows a status of all the devices that are currently connected.



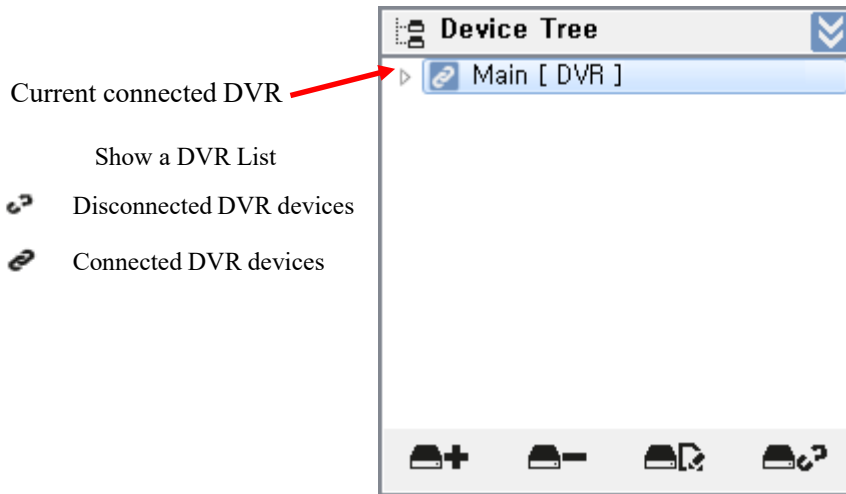
Log View : It shows a log of all the devices that are currently connected.







E-Map View : It can make to manage events of your device on your map.

5.3 Live Tab

- Device Tree Widget: add and connect to DVR devices.



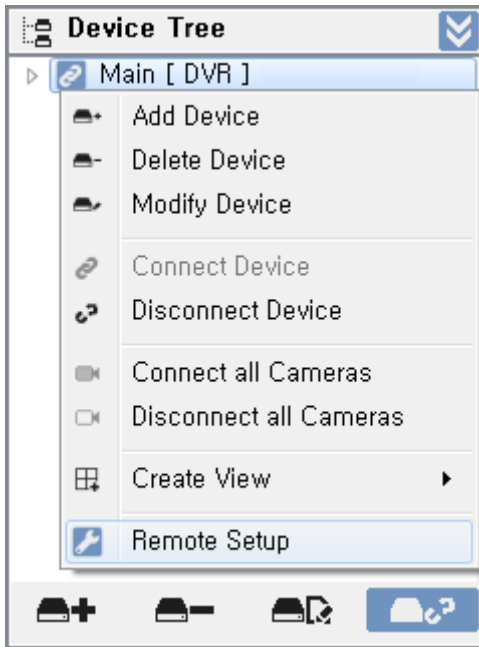
-  Add a DVR device
-  Delete a DVR device
-  Modify a DVR device
-  Connect to a DVR device

-
- Add and modify DVR devices.

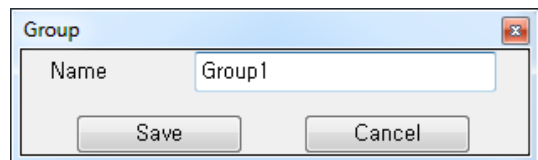
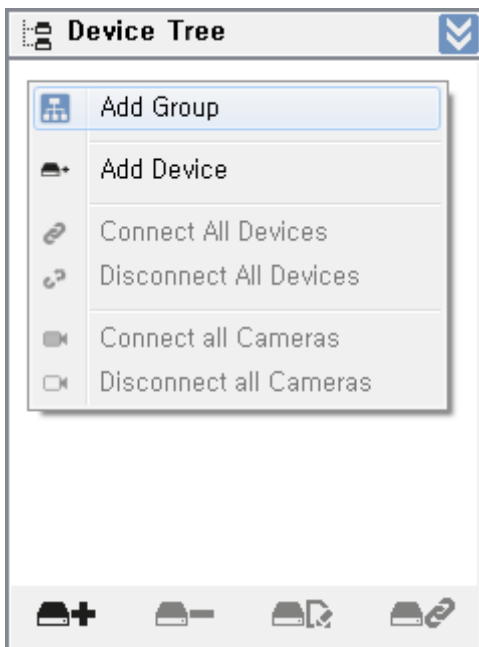
Device		Model	Channel	Address	Port
Name	<input type="text"/>				
Magic IP	<input type="checkbox"/>				
Address	<input type="text"/>				
Port	<input type="text"/>				
ID	<input type="text"/>				
Password	<input type="text"/>				
Rec Stream	Not use				
Auto Reconnect	Not use				
Encryption	Not use				
Group	None				

- Name : Enter the name you want to use to refer to your Device.
- Magic IP : Check Magic IP if you set Magic IP your device.
- Address : Enter IP address or Magic IP name your device.
- Port : Enter port for your device or no need to enter for Magic IP.
- ID : Enter ID for your device.
- Password : Enter Password for your device.
- Rec Steam : You can use your recoding streaming your device.
- Auto Reconnect : Automatically reconnect your device.
- Encryption : Enable encryption for your device.
- Group : set a group for your devices.
- Rescan : Scan for devices connected to the local network.

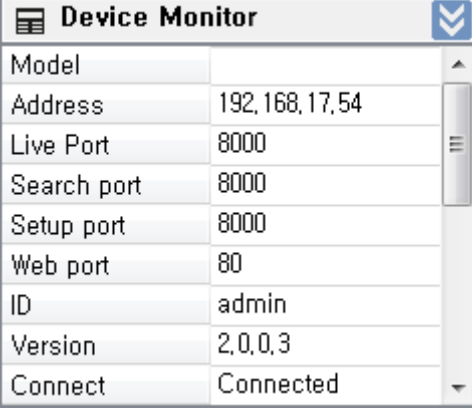
- Right click on a device, you can remote setup of the DVR.



- Right click on Device Tree, you can add group of your DVRs.



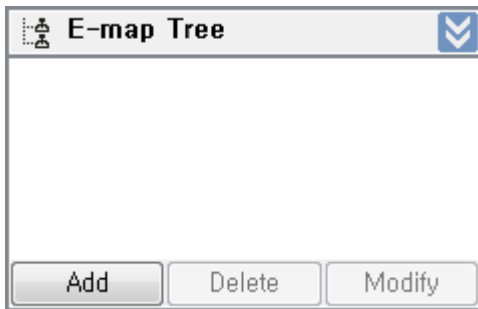
-
- Device Monitor Widget : Show the information of the selected DVR devices.



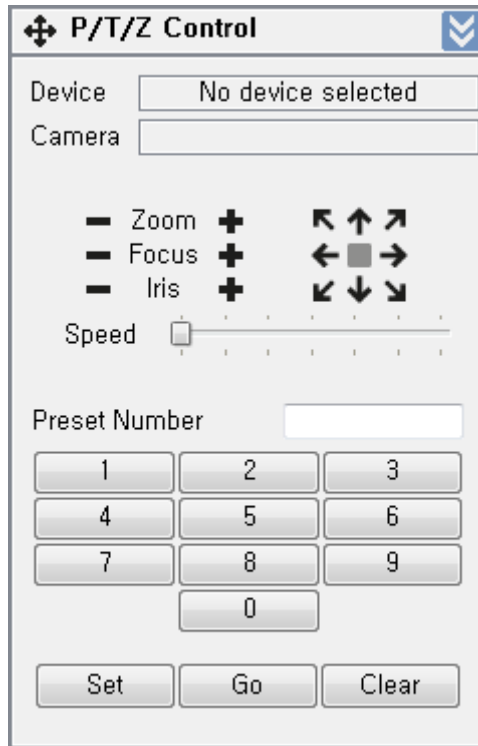
Device Monitor	
Model	
Address	192,168,17,54
Live Port	8000
Search port	8000
Setup port	8000
Web port	80
ID	admin
Version	2,0,0,3
Connect	Connected

- Show the information of the connected DVR devices.
- The information is updated automatically depend on it's status connected or disconnected.

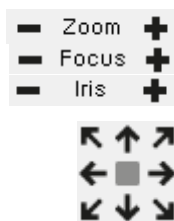
- E-map Tree Widget : For more detail, see E-map Tab.



- P/T/Z Control Widget : Control a video of pan tilt camera.



1. Pan tilt Control



Zoom Control
Focus Control
Iris Control

Panning and Tilting Control

2. Preset

Preset is a function that memorize the temporary position of camera.

Set : Memorize a position of a number that you want to use from 1 to 256 with the Set button.

Go : Move the camera to the position of the number that you want to use with the Go button.

Clear : Clear the position of the number that you do not want to use with the Clear button.

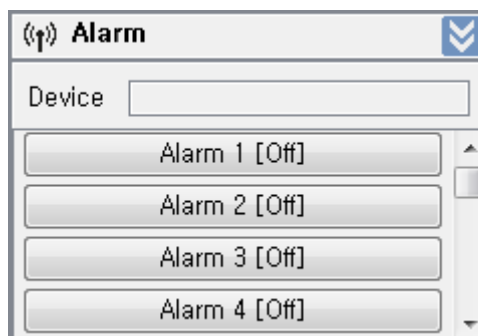
※ How to type Preset Number

1. Use Preset Number at the bottom of keyboard window.
2. Use virtual Keyboard after you double click the Preset Number window.

-
- Color Control Widget : Control brightness, contrast, saturation, hue, and sharpness of analog, TVI and AHD cameras.



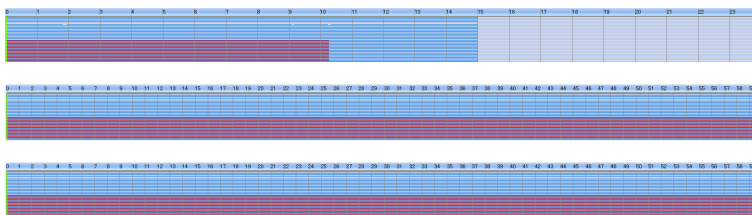
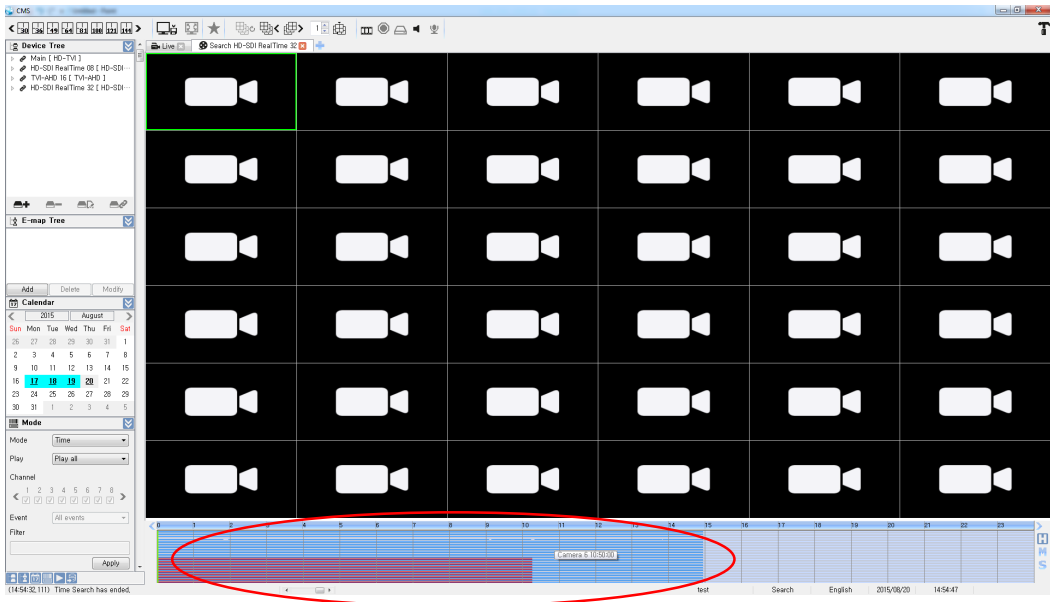
- Alarm Widget : Control alarms of the DVR.



5.4 Search Tab

- Play Time Line

You can check and change the time of recorded video on Search tab.



← H mode (24 hour)

← M mode(60 minute)

← S mode(60 second)



: Change the mode of Time Line

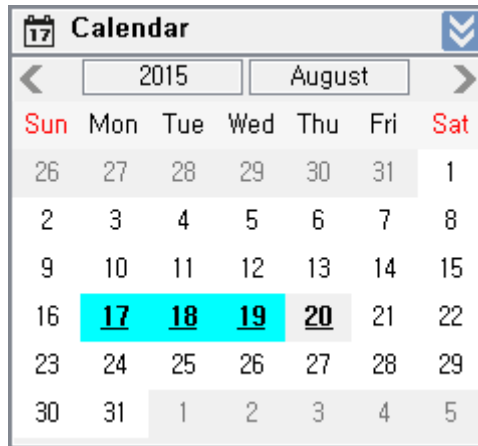
- The time is loaded as shown in the figure when you choose the date of existed data from Calendar.

- The time is shown when you put the mouse icon on the time area.

- Time Line Bar(a vertical bar) is the position where is playing now and moving depend on status of the recorded data.

- If you move the position of Time Line Bar with the mouse during video playback, it will play at the position.

- Calendar Widget : Show the recorded data of date.

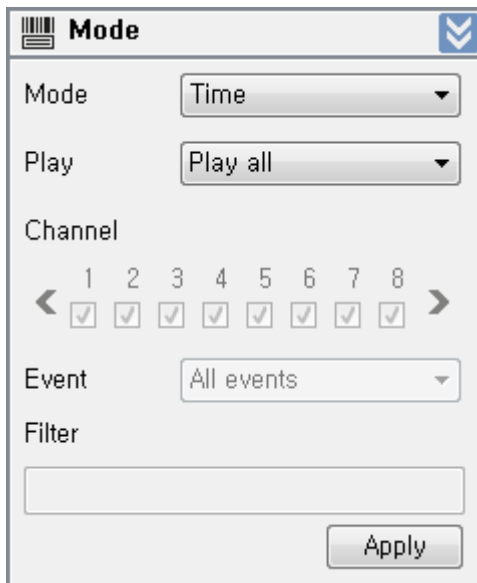


Calendar shows the recorded data of date on a DVR Device.

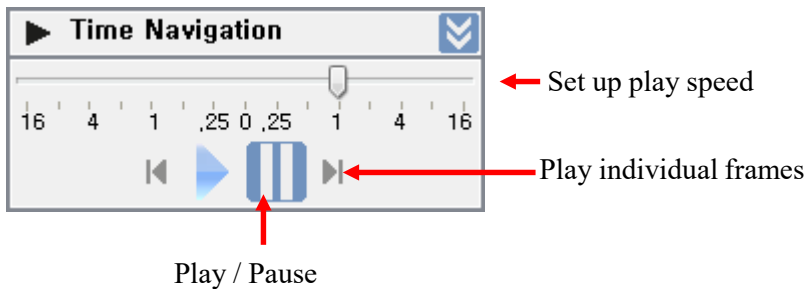
- If there is existed data on the date, it will turn sky blue. If there is no data on the date, you cannot move on it.

- If there is existed the recorded data on the same time and date, it will turn bold green. Another data window will pop up in case you choose bold green date as above figure.

- Mode Widget : Choose a mode of the recorded data.

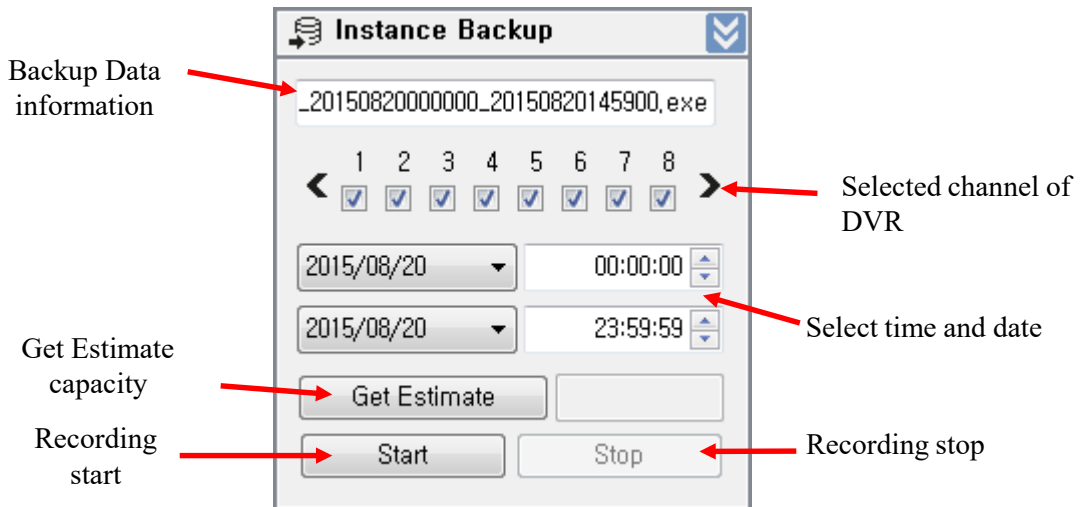


-
- Time navigation Widget: Control the playback with Time navigation Widget that can play, pause, play speed, and so on.



- Set up play speed (x-16 ~ x16).
- Play & Pause the recorded data.
- Play individual frames during a pause.

- Instance Backup Widget : Backup a video.



- Instance Backup is the function that save the recorded video on the PC from DVR device.

- If you create Search View, automatically the information of the device will be loaded as shown in the figure.

- You can choose the channel and device to be stored on the PC via combination box.

- If you change the time and date to be stored, automatically the file name will be also changed to the time and date.

- Get Estimate for the selected date and time from the start time until the last day that is stored on the PC estimated capacity is calculated and displayed.

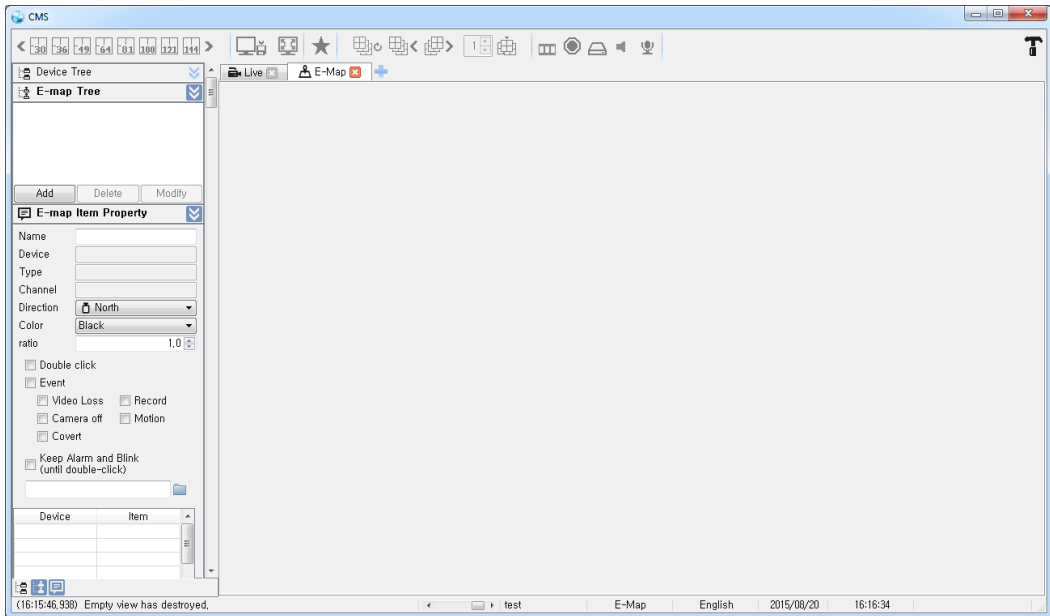
※It is possible to change and save to AVI and EXE as a supporting format in configuration.(AUTO : EXE)

5.5 Health Tab

Main (192.168.17.54 / admin)					Confirm
	1		2		
Size (GB)	465,1/465,6		None		
Error/Test	Off				
Temperature	Off				
Reallocation					
Total size	476785,7 MB				
Percent	99,9 %				
	1	2	3	4	
Sensor	Off	Off	Off	Off	
Motion	Off	Off	Off	Off	
POS	Off	Off	Off	Off	
Video Loss	On	On	On	On	
Record	Off	Off	Off	Off	
Camera off	Off	Off	Off	Off	
Covert	Off	Off	Off	Off	
Alarm	Off				

- Health tab shows the status of all the devices that are currently connected.

5.6 E-Map Tab



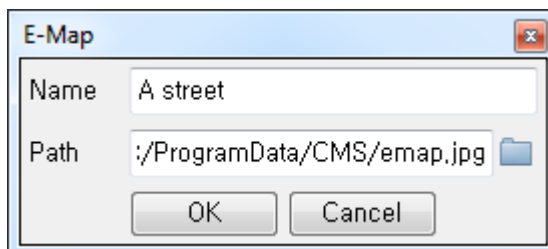
- E-map Tree Widget and E-map item Property Widget.

※ How to make and use E-map

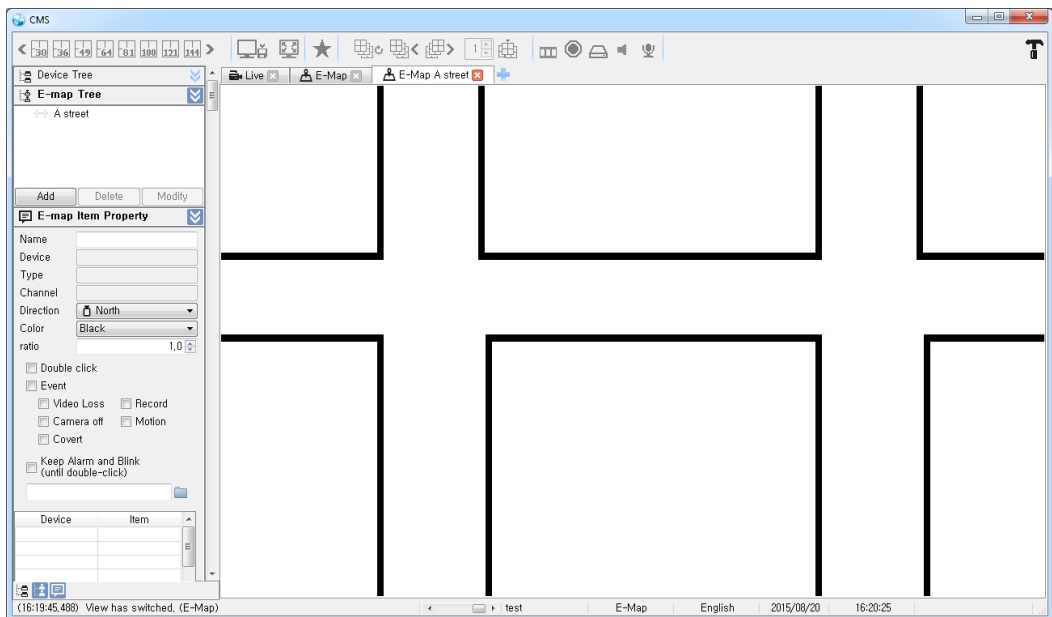
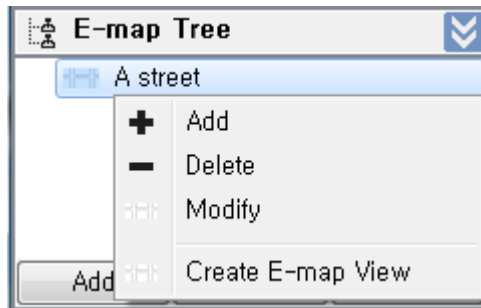
1. Go to E-map Tree and click 'Add'.



2. Type a name and choose a image for using your E-map.

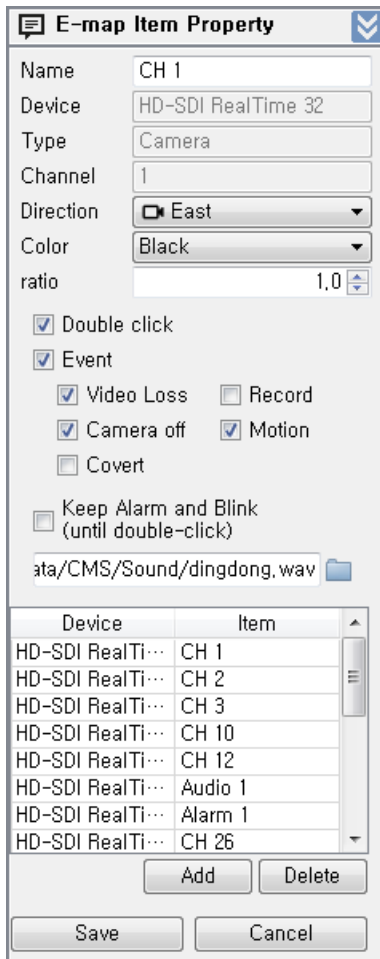
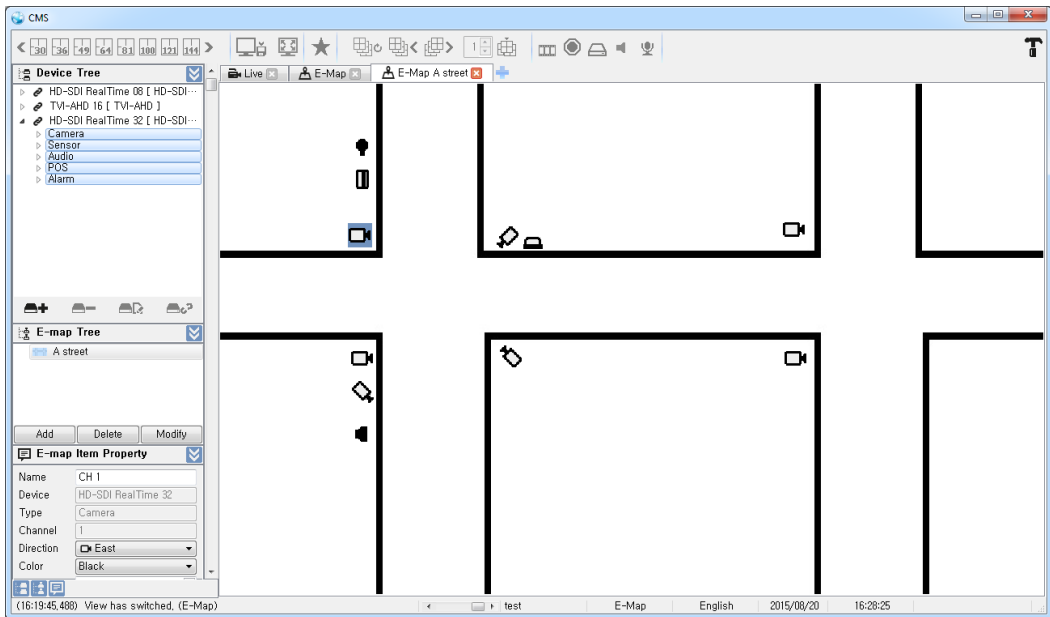


3. Right click on your E-map list, you can create E-map view.



4. Drag & Drop a camera, sensor, audio, POS, and alarm from Device Tree.

5. Choose a item of your all item on your E-map and go to E-map Item Property widget.



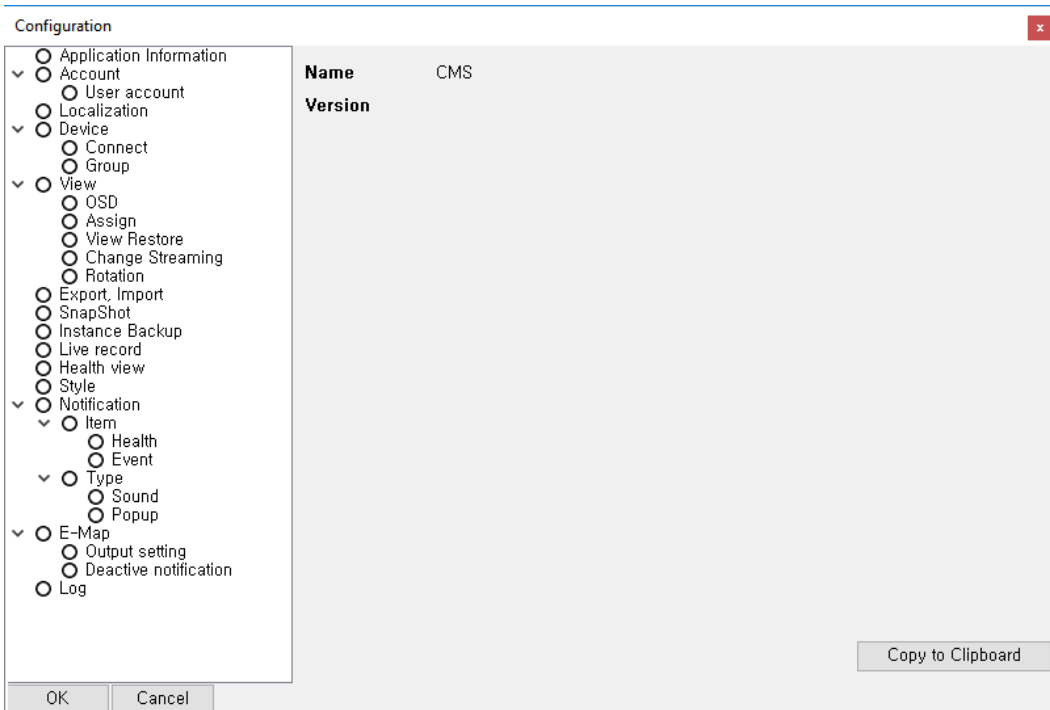
6. You can manage your E-map item by Event options.
7. If you add your items on E-map Item Property widget, you can manage them as a group.

5.7 Configuration



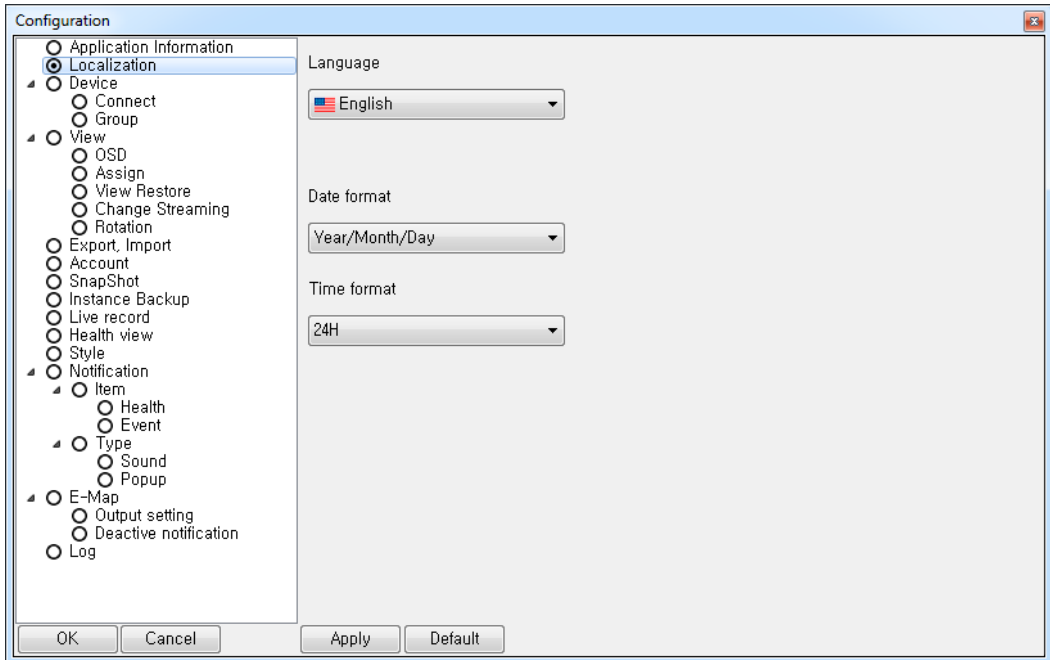
Click the icon and Configuration window will be pop up.

1. Application Information



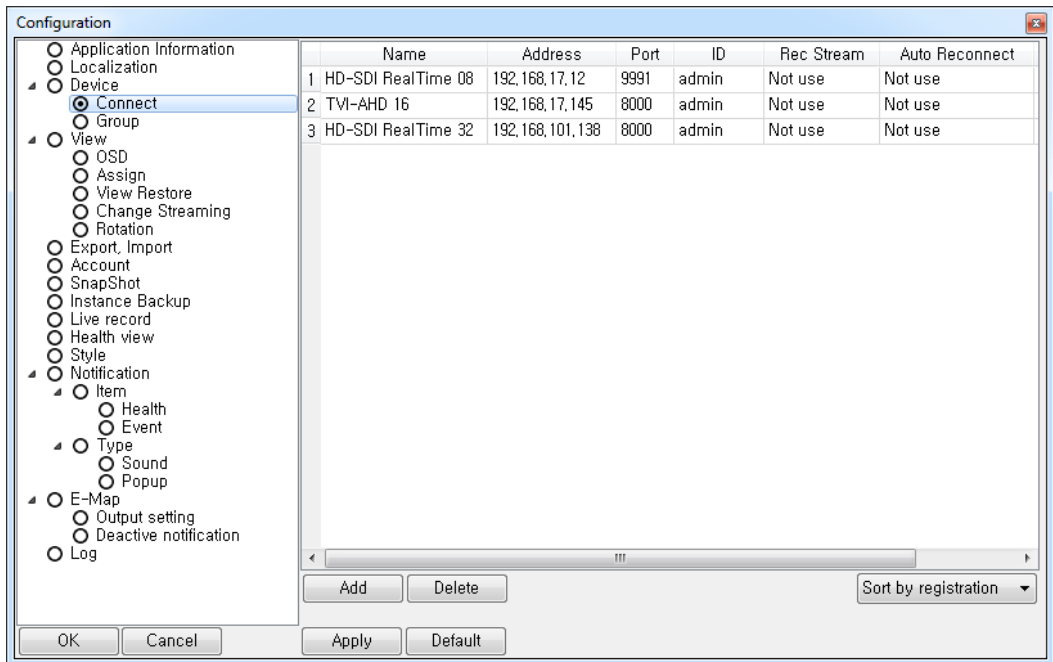
- You can see the version of HDR_MER_CMS

2. Localization



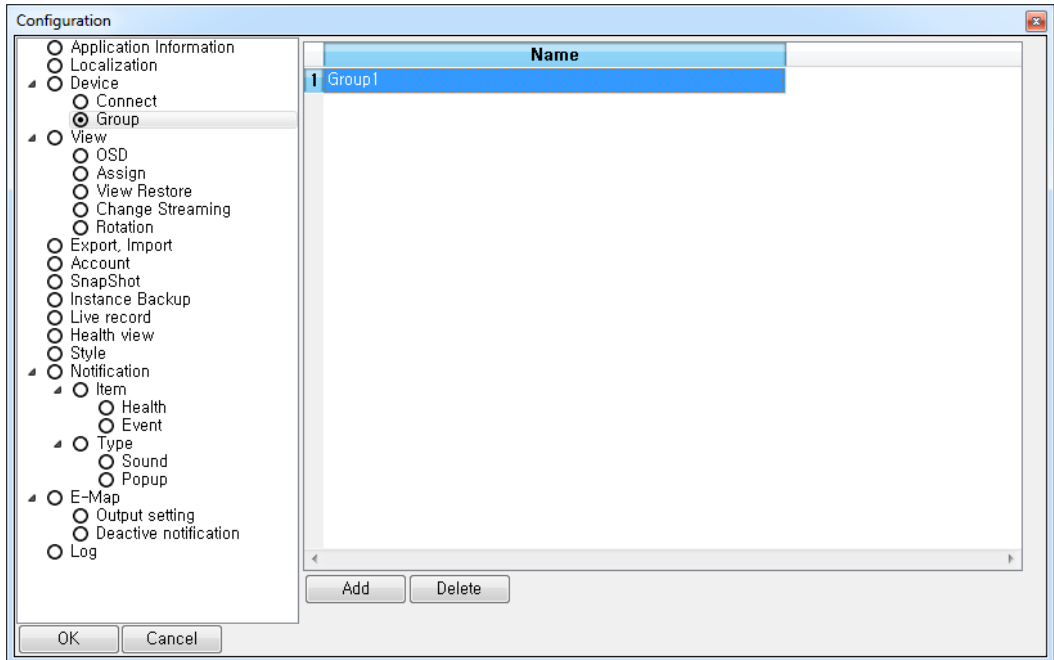
- Language settings will apply after HDR_MER_CMS program restart if you change to other language.

3. Device - Connect

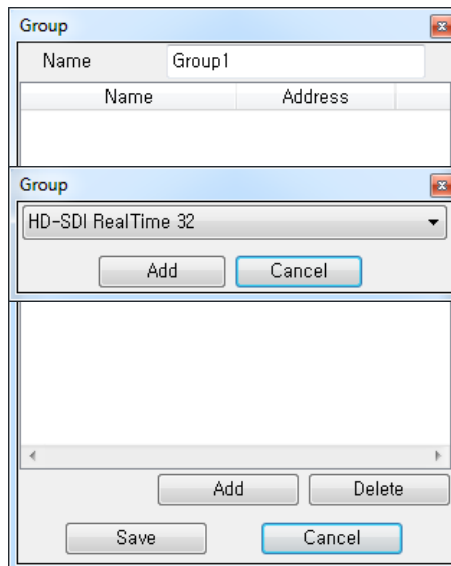


- Device-Connect shows the information of connected devices and is able to add and delete
- Add devices with Add button as Device Tree Widget.
- If you change setting on Device-Connect, Device Tree Widget is also immediately updated.

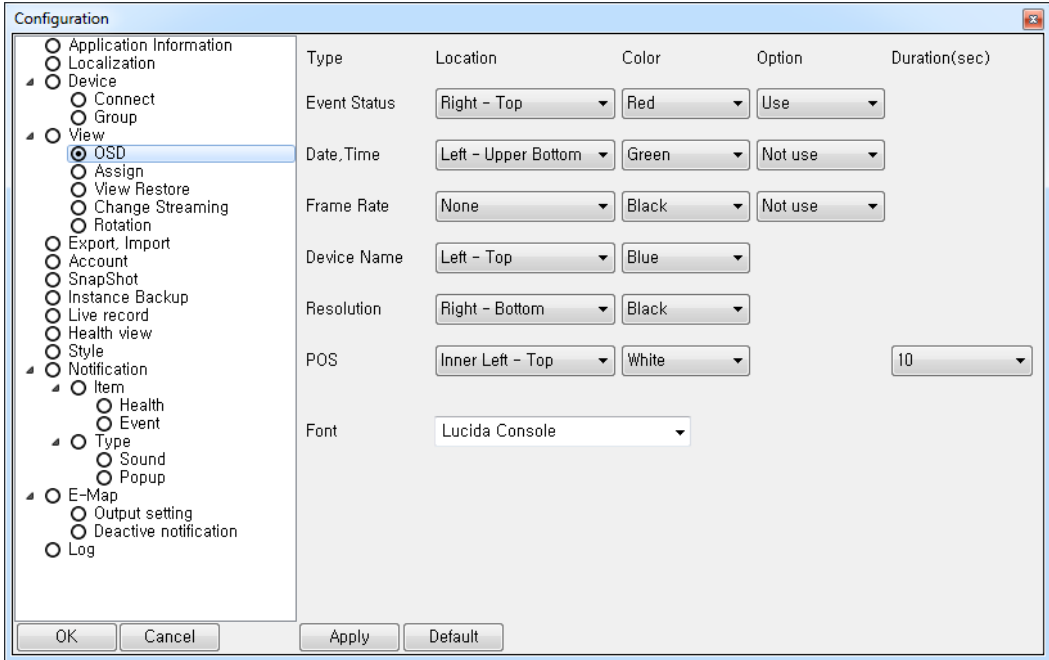
3. Device - Group



- Add your group.
- Double click your group and add your DVRs

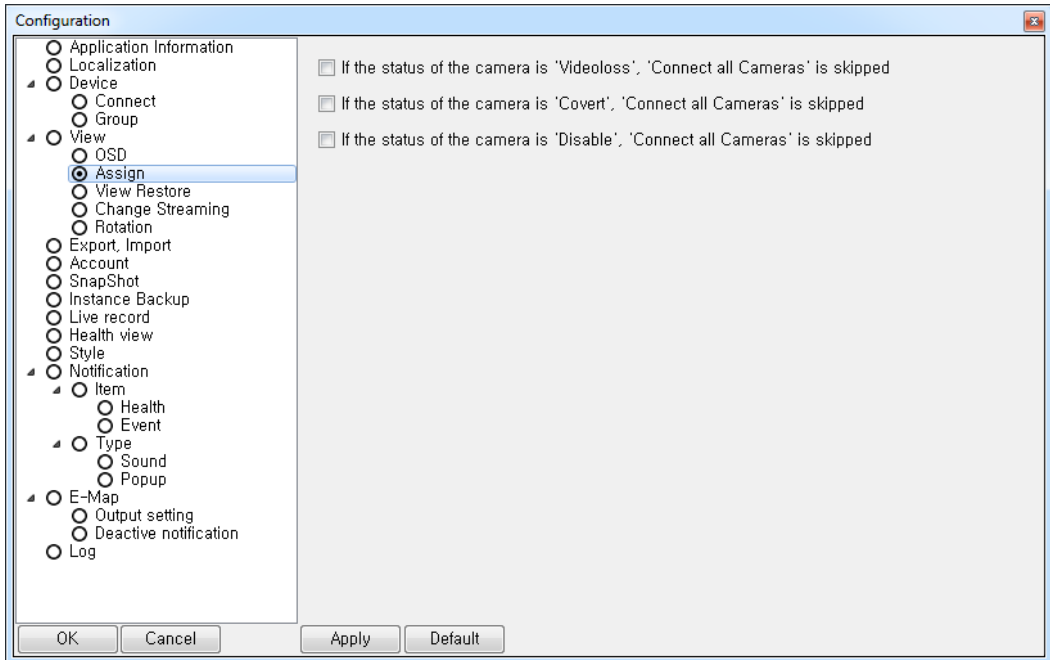


4-1. View - OSD



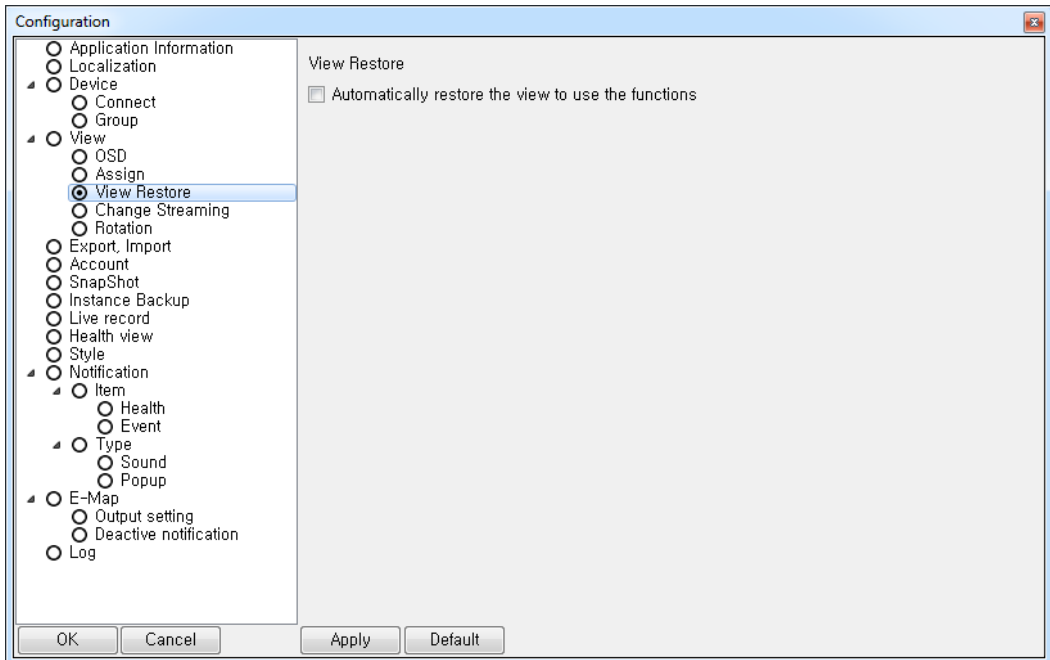
- Select options and colors used for Event Status, Date/Time, Frame Rate, Device Camera Name, Resolution and POS.
- If you change setting on View-OSD, it is immediately updated on screen.

4-2. View – Assign



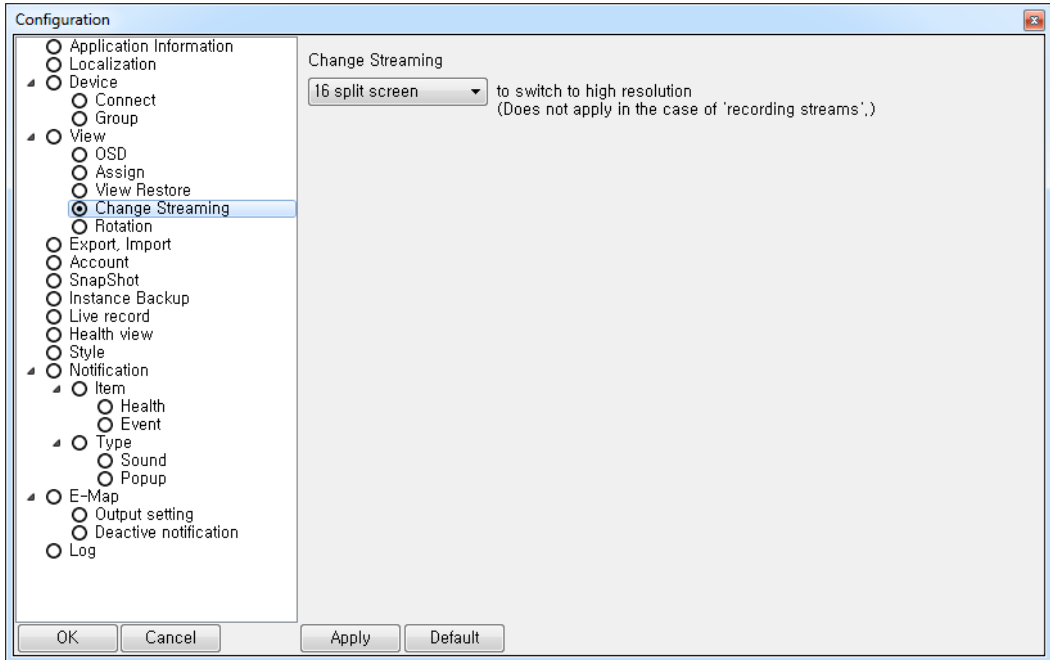
- Depend on the status of the camera, you can skip it on Live View.

4-3. View – View Restore



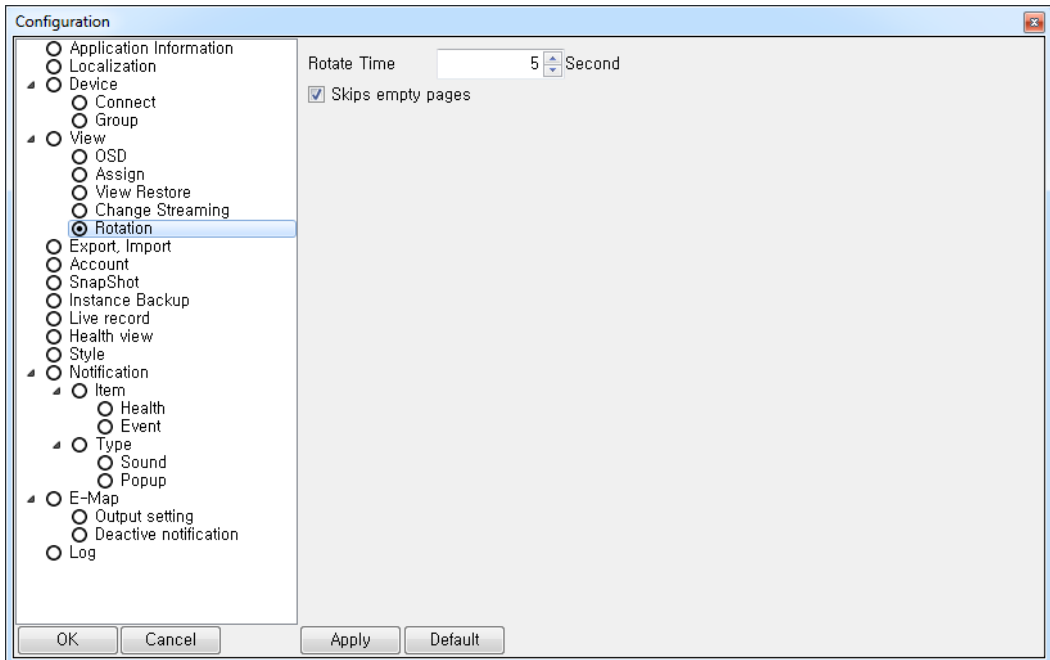
- If you check the box, it automatically restore the view to use the functions.

4-4. View – Change Streaming



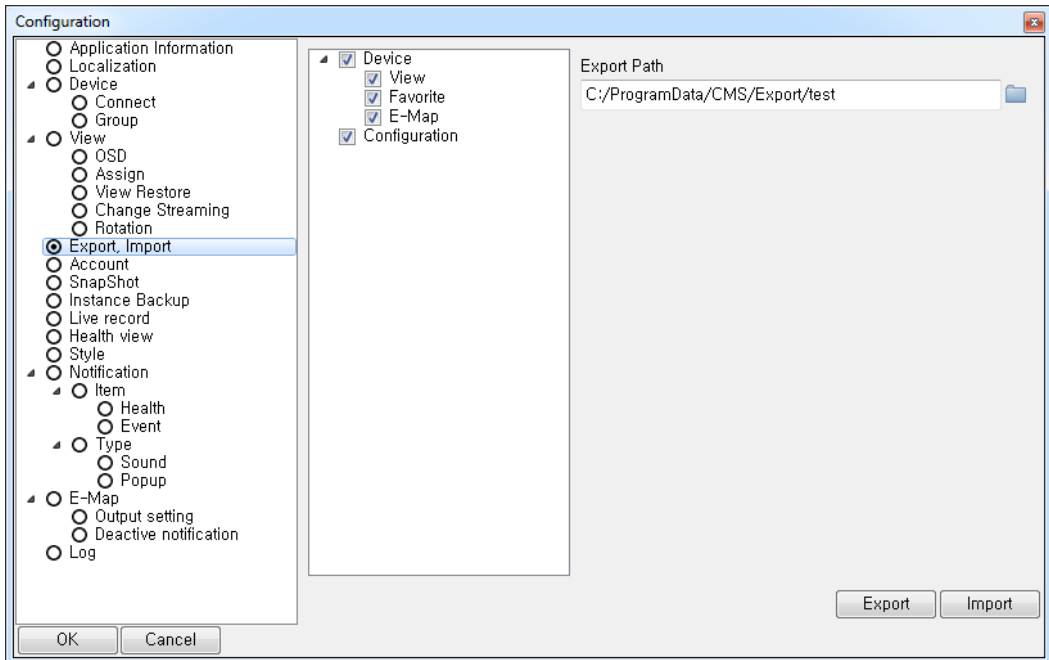
- Set a change streaming by number of split screen.
- If you set a change streaming to 4 split screen, you will see a video with high resolution supporting devices up to 4 split screen. If you set a split screen more than 4 split, you will see a video with low resolution.

4-5. View – Rotation



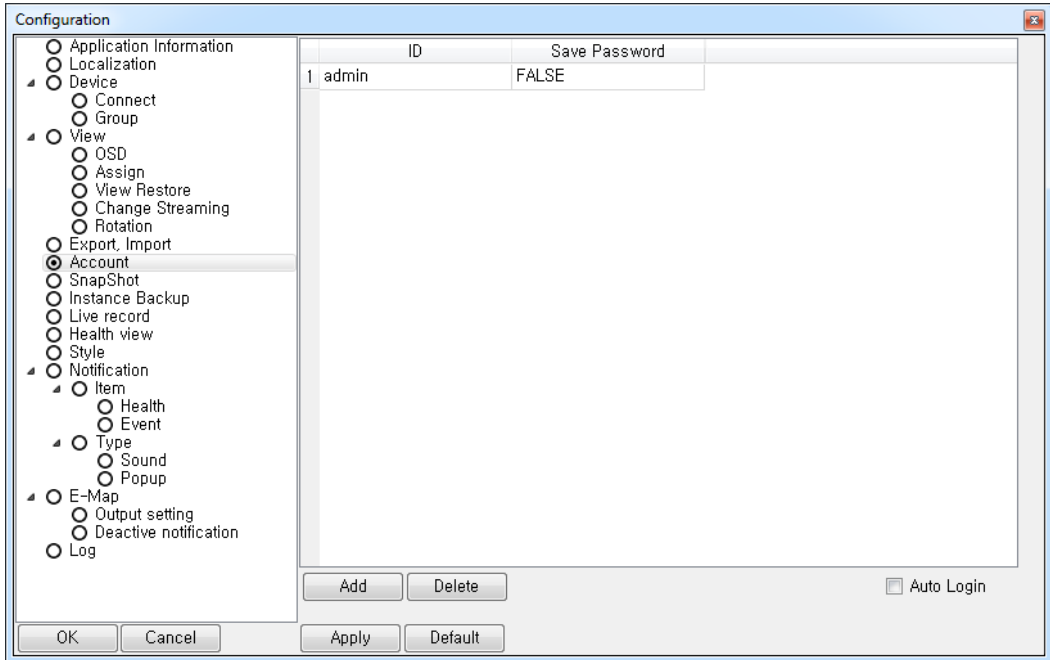
- Rotation : Set the rotate time of pages.
- It skips empty pages, if you check Skips empty pages.

5. Export, Import



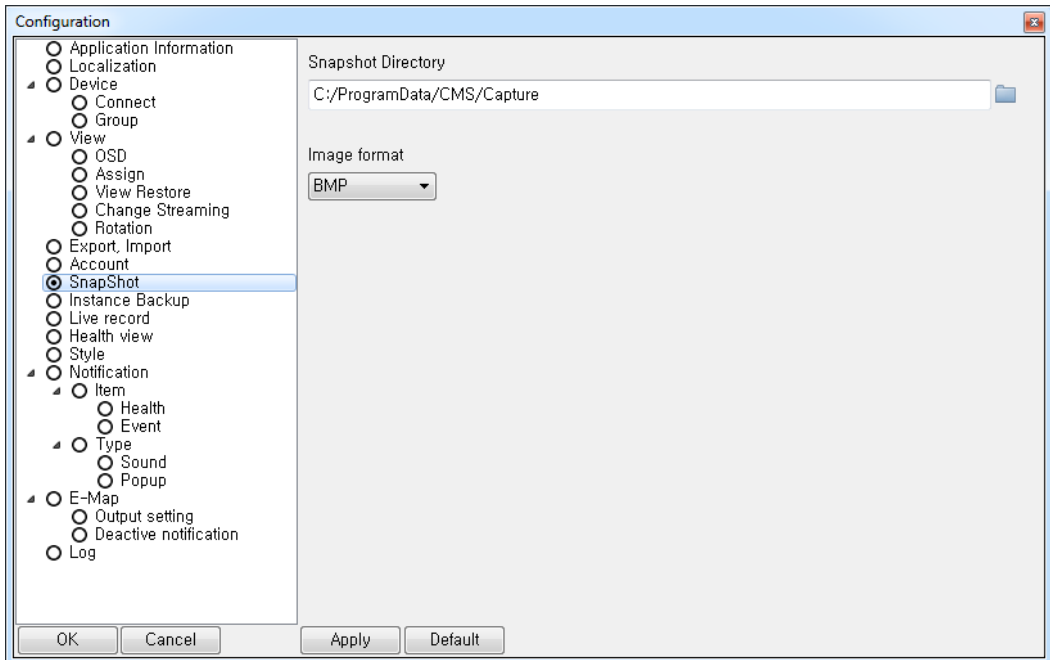
- Export, Import is a function that make other users use the same setting to have view, favorite and E-Map of device, and Client Configuration when other users import the exported setting.
- Export : Export a set file to path.
- Import : Import a exported file. Log in the imported account and It will apply after HDR_MER_CMS program restart.

6. Account



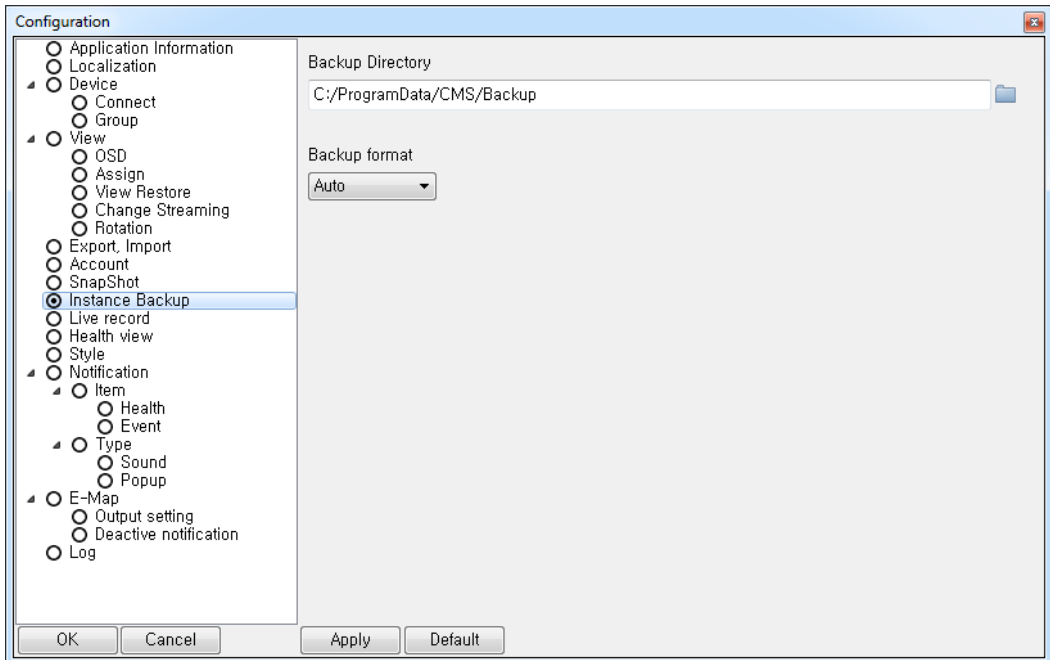
- Account : Add / Delete a user account.
- You can modify added account when you double click your account.
- Auto Login : Connect a account that connected account at the last.

7. Snapshot



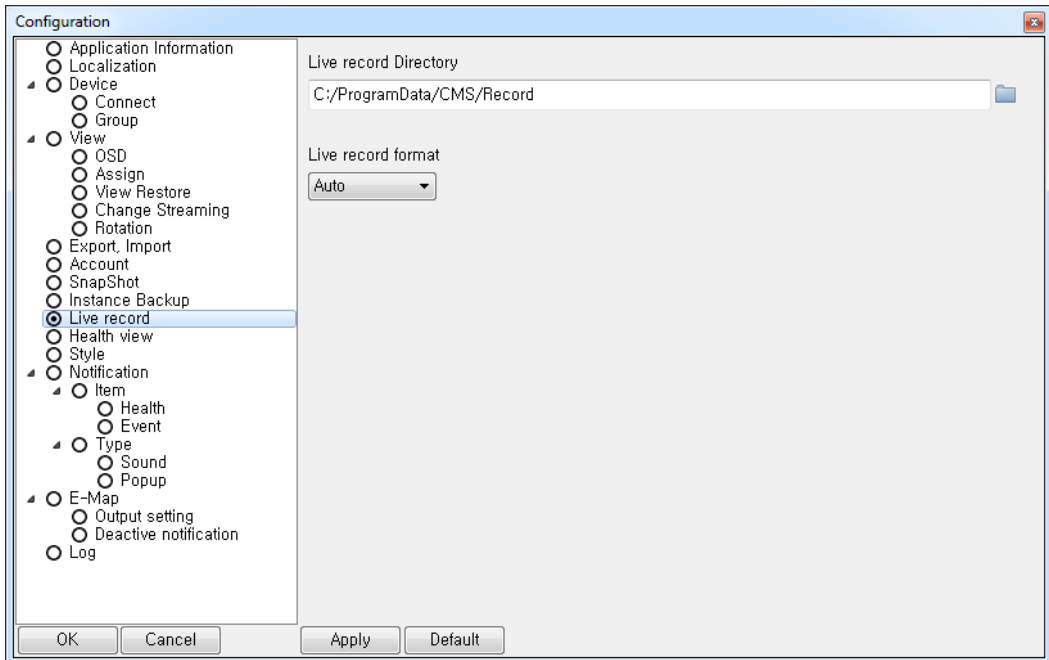
- Snapshot Directory : Set a path to be saved a Screen Capture.
- Image format : Set a image format BMP or PNG

8. Instance Backup



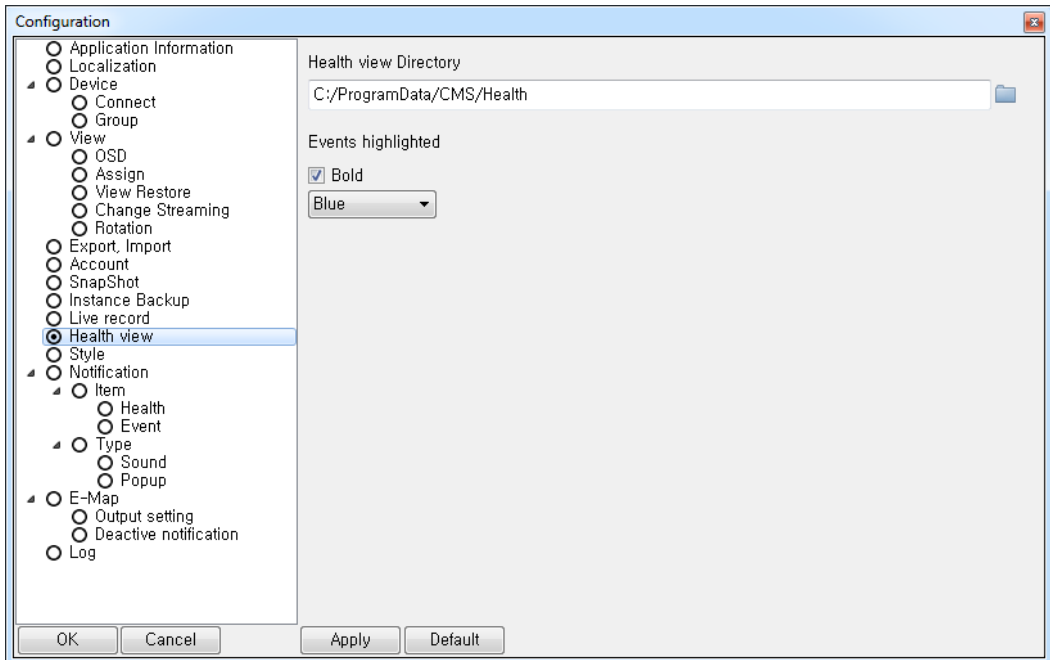
- Backup Directory : Set a path to be saved a backup file.
- Backup format : Set a backup format Avi or Exe. If you choose Auto, it will be Exe.

9. Live record



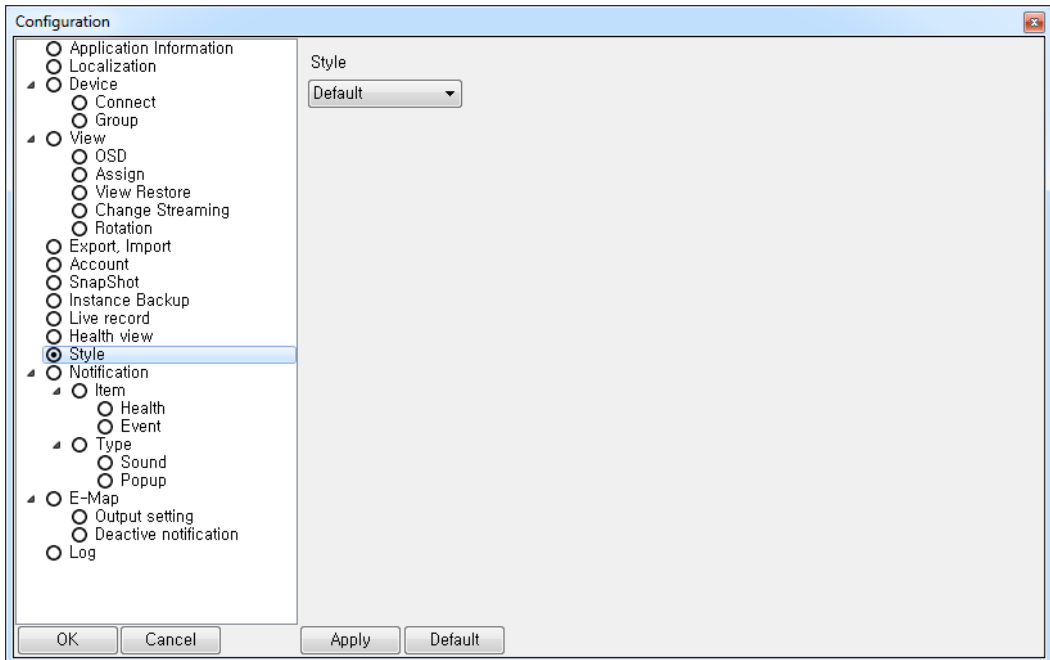
- Live record Directory : Set a path to be saved a record file.
- Live record format : Set a record format Avi or Exe. If you choose Auto, it will be Exe.

10. Health view



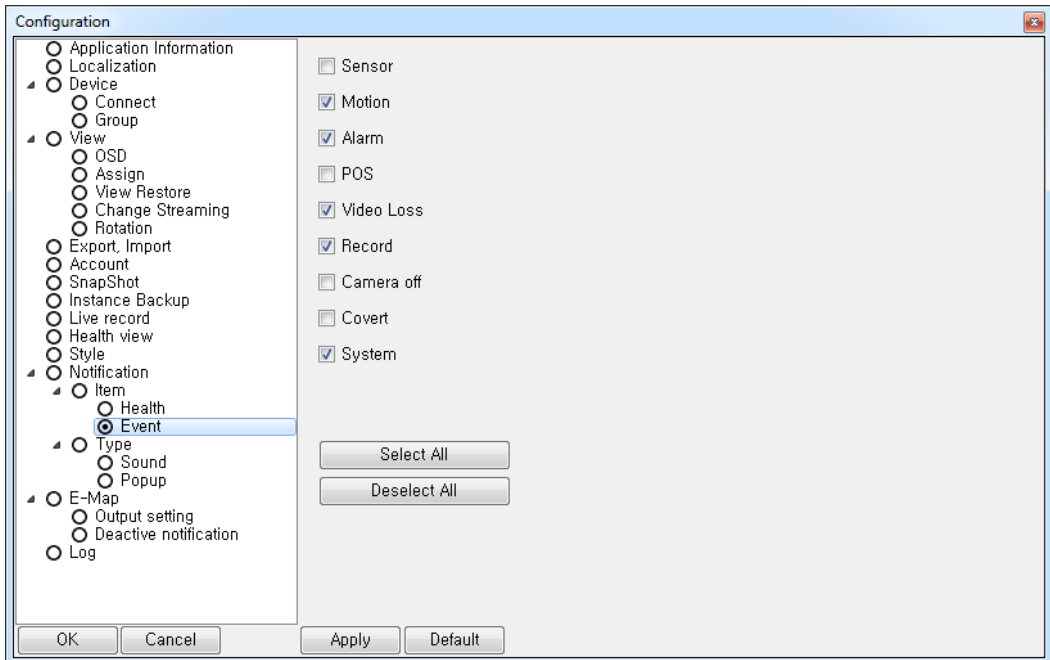
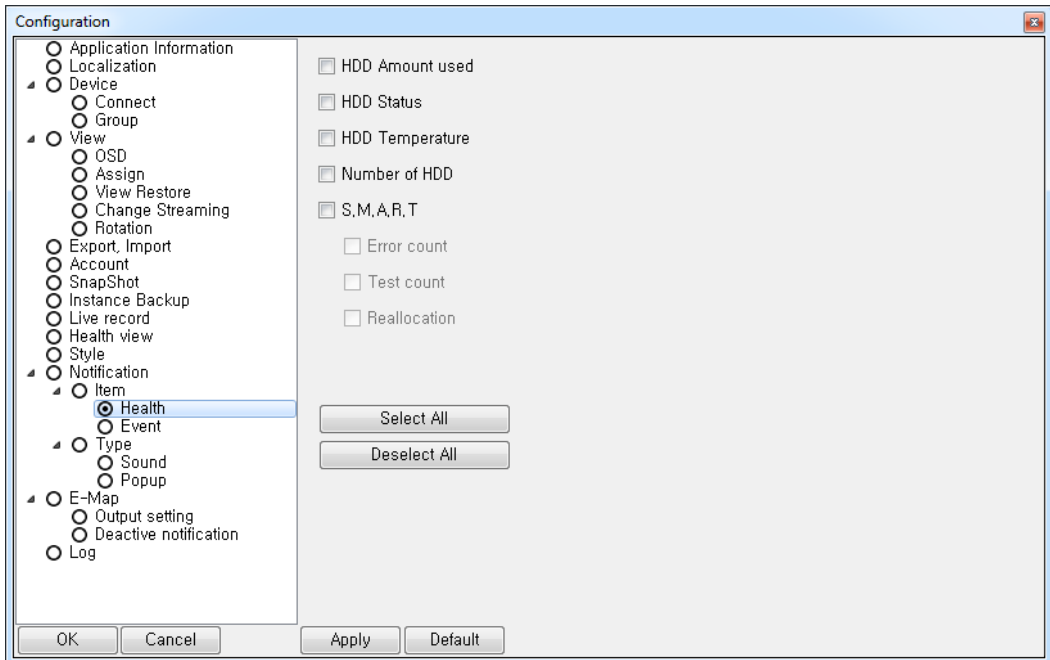
- Health view Directory : Set a path to be saved a health information file.
- You can change a color and bold for the latest events.

11. Style



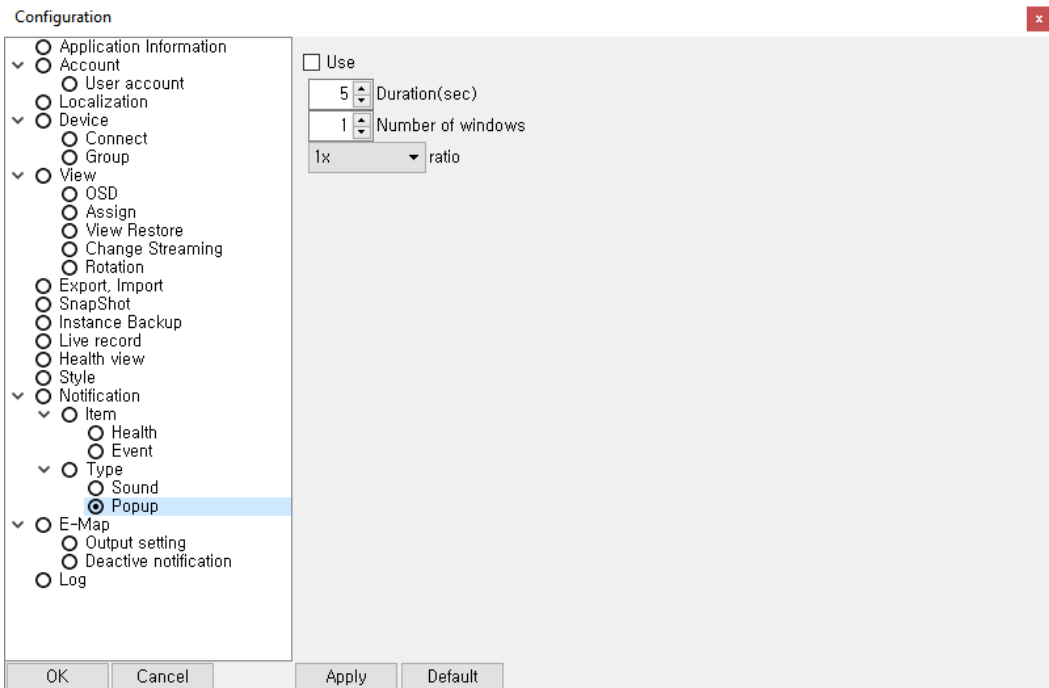
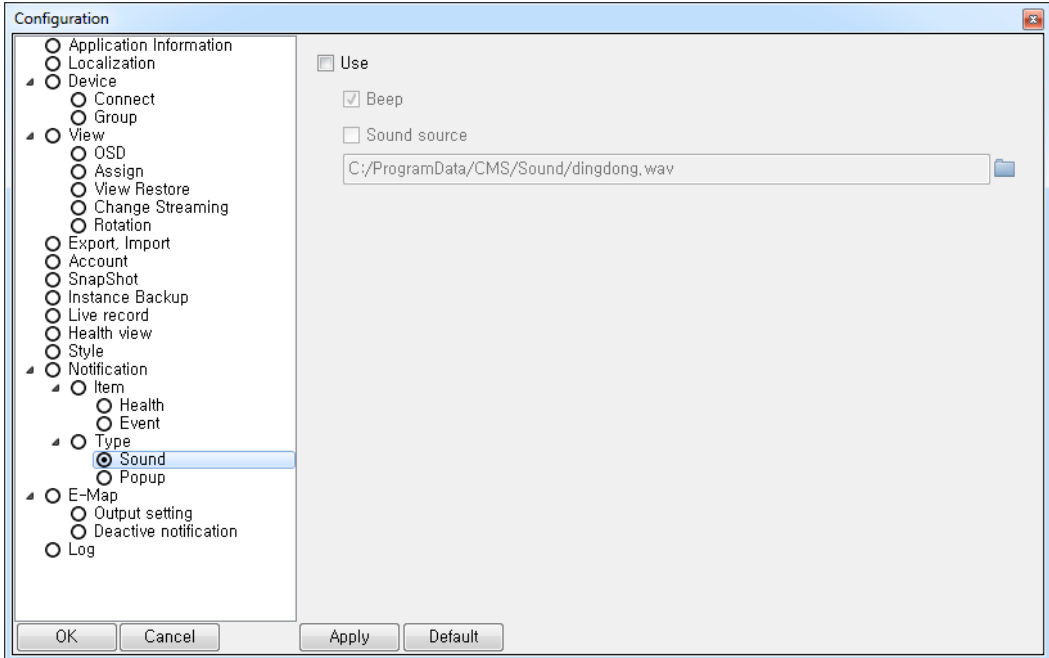
- Style settings will apply after HDR_MER_CMS program restart if you change to other style.

12-1. Notification - Item



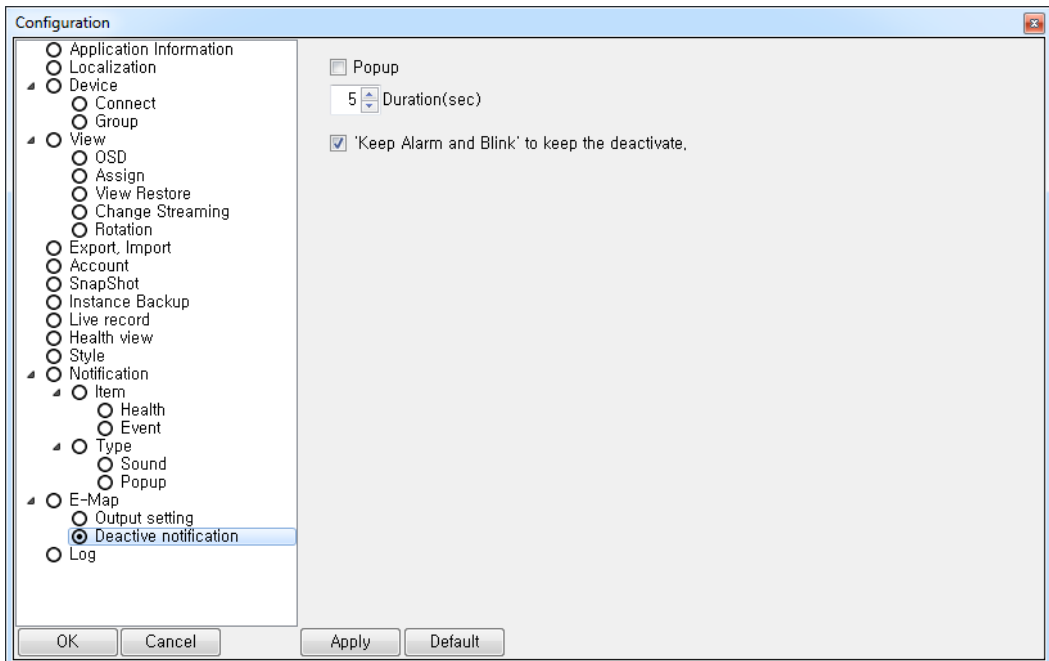
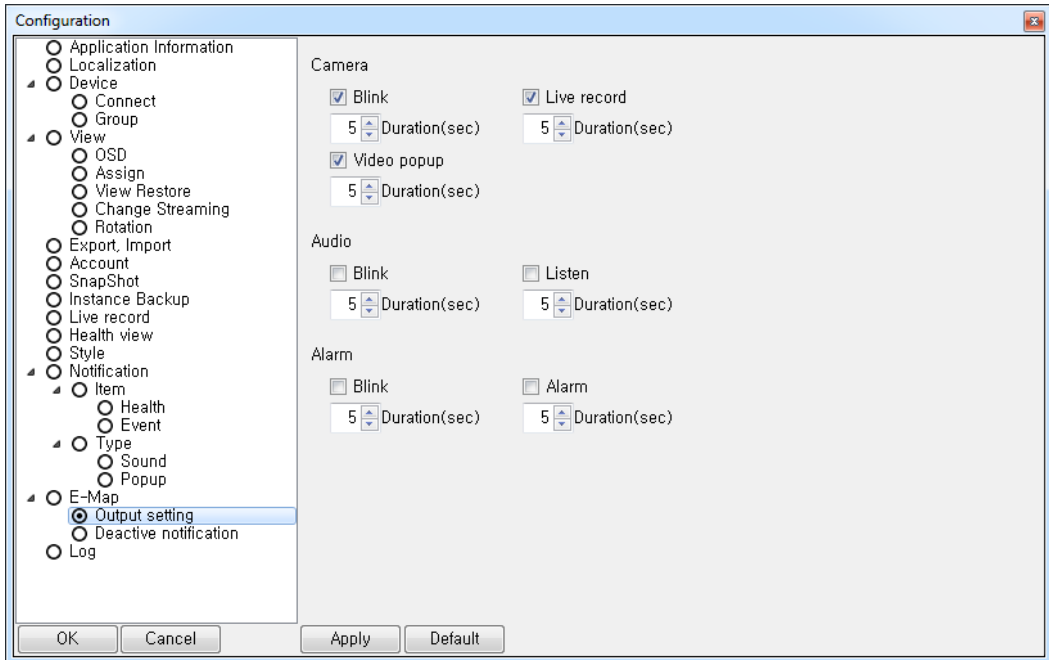
- Notification - Item - Health & Event : Select notifications.

12-2. Notification - Type



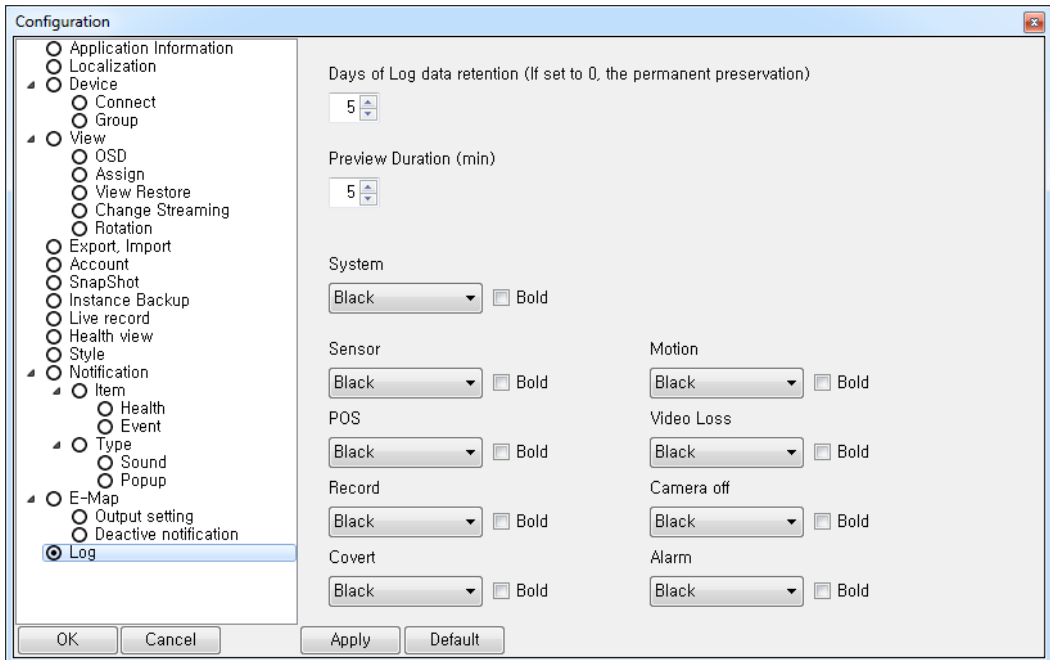
- Type – Sound & Popup : if you check the notification item box, you can get notification by sound and a popup window.

13. E-Map



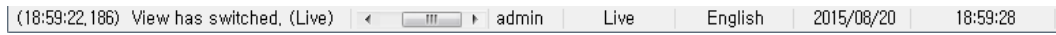
- E-Map – Output setting & Deactive notification : if you check the E-map Item Property option, you can set their output and popup.

14. Log



- You can set a color and duration of HDR_MER_CMS log.

5.8 Status Bar



- Status Bar : Show a status of HDR_MER_CMS, current connected account, kind of view, Language, date, and time from the left.



eneo® is a registered trademark of VIDEOR E. Hartig GmbH
Exclusive distribution through specialised trade channels only.

VIDEOR E. Hartig GmbH
Carl-Zeiss-Straße 8 · 63322 Rödermark/Ger-many
Tel. +49 (0) 6074 / 888-0 ·
Fax +49 (0) 6074 / 888-100
www.videor.com
www.eneo-security.com

Technical changes reserved

© Copyright by VIDEOR E. Hartig GmbH
03/2019