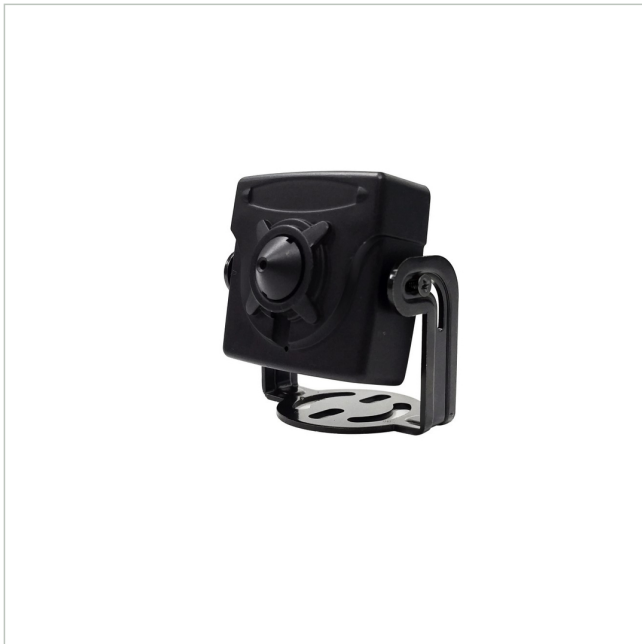


eneo MSM-42F0037MPB



SKU: 243654



1/2.8" HD Board Camera, Colour, 1920x1080, 3.7mm, Pinhole, WDR, Housing, 12VDC

Main Features

1/2,8" 2 Megapixel SONY STARVIS 2 CMOS-Sensor

Super low light performance by Sony STARVIS 2 technology Pinhole lens 3.7mm

Board Camera with rugged metal cabinet

Resolution max. 1920x1080 (Full HD)

Separate outputs for digital and multi-signal

Multisignal: HD-TVI, AHD, CVI and Composite selectable

Digital signal: EX-SDI, HD-SDI selectable

Electronic Day/Night function

ROI (Region of Interest) WDR mode

Integrated motion detector, defog, privacy zones

Specifications

General	
Dimensions (WxHxD) (extended)	37x37,8x21,5mm
Weight	0.11 kg
Text overlay	available
Color (Housing)	black
Housing type	Inside
Housing material	Aluminium
Camera Type	Board Camera
Power consumption	1.5 W
Mounting type	Ceiling, Wall
Power supply	12VDC

eneo MSM-42F0037MPB

Continuation of the specifications

Temperature Range (Operating)	-10°C ~ +50°C, @ Luftfeuchtigkeit 20%-80% (nicht kondensierend)
Wide Dynamic Range (WDR)	D-WDR
Camera	
Backlight compensation	Yes
Low Speed Shutter	Yes
Recording sensor	CMOS
Chip size	1/2,8"
Camera shape	Module
Signal-to-noise ratio	50 dB
Day/night mode	Automatic, Day, Night, extern (Sensor)
White balance	Automatic, Preset, Manual, AUTOext
Photosensitivity	0,2 Lux bei F2,3
System	True Day&Night
Day/night switching	Switchable IR Filter (ICR)
Display	
Image resolution max.	1920x1080
DORI	
Watch (62px/m)	21 m
Detect (125px/m)	11 m
Identify (250px/m)	5 m
Perceiving (25px/m)	59 m
Functions	
Motion detector	Yes
Digital Noise Reduction (DNR)	Yes
Menu languages	Chinese, English, French, German, Japanese, Korean
Notes	
Remark	NDAA compliance under Section 889
Interfaces / Inputs/ Outputs	
Alarm inputs	0
Number of alarm outputs	0
External connections	voltage input, 1x SDI Signal (BNC), 1x HD/SD Analog Signal (BNC)
Interface Protocols	UTC (HD Signal Format)
Control Interfaces	Coaxitron (HD Protocol)
Video Outputs	AHD, Composite (FBAS)
Parts supplied	
Scope of delivery	Quick Installation Guide, 2x mounting screws, OSD menu control board, video sub-output cable
Lens	
Horizontal angle of view	72°
Vertical angle of view	37°

eneo MSM-42F0037MPB

Continuation of the specifications

Iris Control	No
Focal length	3,7 mm
Lens Type	Prime lens
Zoom Factor (Digital)	0
Video	
Resolution (extended)	1920x1080, 1280x720, 704x576, 720x480
Signal Format	AHD @ 2MP, Composite (FBAS), EX-SDI @ 2MP, HD-SDI @ 2MP, HD-TVI @ 2MP
Product labeling:	
EAN/GTIN	4260229841341
Manufacturer order number	243654
Series	eneo COAXIZE



eneo is a registered trademark of
VIDEOR E. Hartig GmbH
Carl-Zeiss-Straße 8

63322 Rödermark, Deutschland

Phone: +49 6074 - 888 - 300
Fax: +49 6074 - 888 - 100
E-Mail: info@eneo-security.com
Web: www.eneo-security.com

Stay informed and subscribe
to the eneo newsletter

