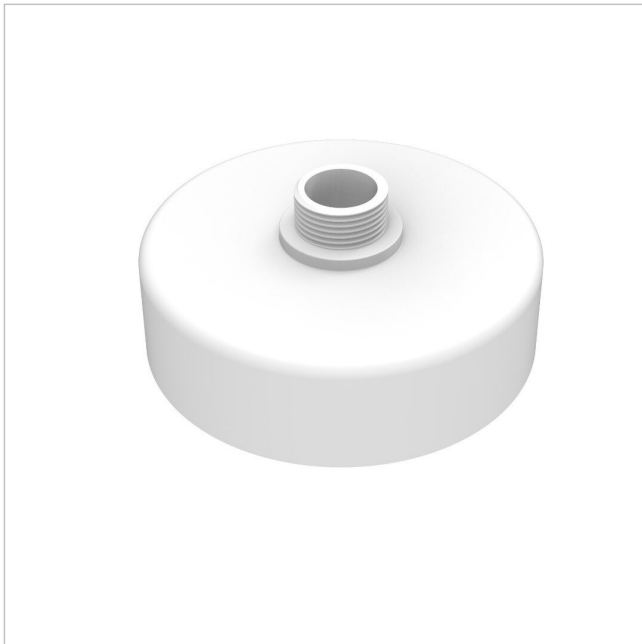


eneo AK-25

SKU: 235525



Camera junction box for ceiling pipe DOME-CH6 and wall bracket DOME-WB6

Main Features

Professional installation

For ceiling suspension including thread for ceiling pipe

Weatherproof IP64

Simple and fast cable connection

Compatible with the following products

Fix dome cameras IN-series

Wall bracket Dome-WB6 and ceiling pipe Dome-CH6

Specifications

General	
Dimensions (WxHxD) (extended)	66,2x146,7mm
Weight	0.296 kg
Color (Housing)	RAL 9003,Pantone P 179-1
Notes	
Remark	G1 external thread: cylindrical pipe thread according to ISO 228 (BSPP),non-tapered. 1 inch nominal diameter (not outside diameter); outside diameter approx. 33.25mm; 11 threads/inch (pitch ≈2.309 mm). Seal via O-ring/flat gasket.
Parts supplied	
Scope of delivery	mounting accessories
Product labeling:	
EAN/GTIN	4260229840207

eneo AK-25

Continuation of the specifications

Manufacturer order number	235525
Series	eneo IN-Serie

Optional Accessory

SKU	Name	Description
234756	eneo DOME-CH6	Ceiling pipe for junction box AK-23 and AK-25, Length approx. 294mm
234755	eneo DOME-WB6	Wall bracket for Connection box AK-23 and AK-25



eneo is a registered trademark of
VIDEOR E. Hartig GmbH
Carl-Zeiss-Straße 8

63322 Rödermark, Deutschland

Phone: +49 6074 - 888 - 300
Fax: +49 6074 - 888 - 100
E-Mail: info@eneo-security.com
Web: www.eneo-security.com

Stay informed and subscribe
to the eneo newsletter

