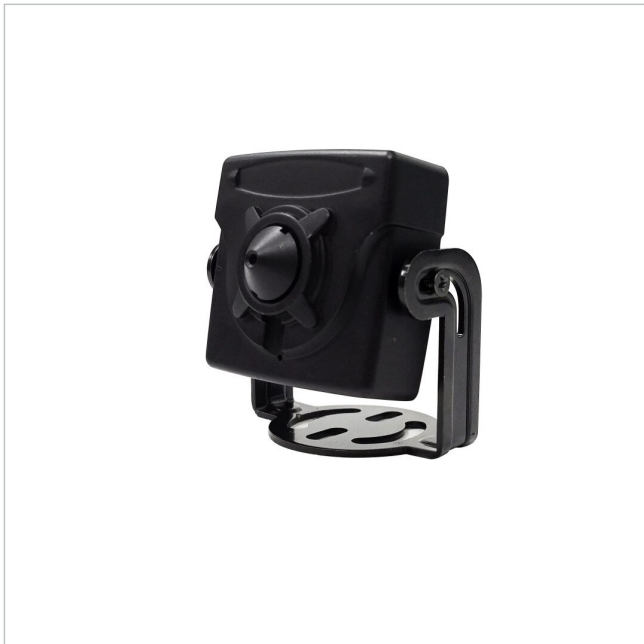


# eneo MSM-42F0037MPA

SKU: 217646



1/2.8" HD Board Camera, Colour, 1920x1080, 3.7mm, Pinhole, WDR, Housing, 12VDC

## Main Features

1/2,8" 2 Megapixel SONY STARVIS CMOS-Sensor

Board Camera with rugged metal cabinet

Resolution max. 1920x1080 (Full HD)

Separate outputs for digital and multi-signal

Multisignal: HD-TVI, AHD, CVI and Composite selectable

Digital signal: EX-SDI, HD-SDI selectable

Pinhole lens 3.7mm

Electronic Day/Night function

ROI (Region of Interest) WDR mode

Integrated motion detector, defog, privacy zones

## Specifications

General	
Dimensions (WxHxD) (extended)	37x37,8x21,5mm
Weight	0.11 kg
Text overlay	available
Color (Housing)	black
Housing type	Inside
Housing material	Metal
Camera Type	Board Camera
Power consumption	1.8 W
Mounting type	Ceiling, Wall
Power supply	12VDC
Temperature Range (Operating)	-10°C ~ +50°C

# eneo MSM-42F0037MPA

## Continuation of the specifications

Wide Dynamic Range (WDR)	WDR 113dB
Camera	
Backlight compensation	Yes
Low Speed Shutter	Yes
Recording sensor	CMOS
Chip size	1/2,8"
Flickerless function	Yes
Camera shape	Module
Signal-to-noise ratio	50 dB
Day/night mode	not available
White balance	Automatic, Preset, Manual
Photosensitivity	0,08 Lux bei F1,4,40 IRE
System	Color
Day/night switching	No
Display	
Image resolution max.	1920x1080
DORI	
Watch (62px/m)	21 m
Detect (125px/m)	11 m
Identify (250px/m)	5 m
Perceiving (25px/m)	59 m
Functions	
Motion detector	Yes
Digital Noise Reduction (DNR)	Yes
Menu languages	Chinese, English, German, Japanese, Korean
Notes	
Remark	NDAA compliance under Section 889
Interfaces / Inputs/ Outputs	
Alarm inputs	0
Number of alarm outputs	0
External connections	voltage input, 1x SDI Signal (BNC), 1x HD/SD Analog Signal (BNC)
Interface Protocols	UTC (HD Signal Format)
Control Interfaces	Coaxitron (HD Protocol)
Video Outputs	AHD, Composite (FBAS), CVI
Parts supplied	
Scope of delivery	manual, mounting accessories
Lens	
Horizontal angle of view	82°
Vertical angle of view	42°
Iris Control	No
Focal length	3,7 mm

# eneo MSM-42F0037MPA

## Continuation of the specifications

Lens Type	Prime lens
Zoom Factor (Digital)	0
Video	
Resolution (extended)	1920x1080,1280x720,720x576
Signal Format	AHD @ 2MP, Composite (FBAS), CVI @ 2MP, EX-SDI @ 2MP, HD-SDI @ 2MP, HD-TVI @ 2MP
Product labeling:	
Manufacturer order number	217646
Series	eneo COAXIZE

## Optional Accessory

SKU	Name	Description
225085	eneo MAM-5DC1004M0A	Distributor, 1x BNC Input HD-TVI, CVI, AHD, CVBS, 4x BNC Output
220299	eneo MAM-5MM1001M0A	Converter, HD-CVI, HD-TVI, AHD, Composite to HDMI, VGA, Composite, Indoor
212984	eneo TVA-1201TRA	UTP Transmitter+Receiver, UTP, BNC, 250m, Indoor, HD TVI CVI, AHD, CVBS, Active, 12V
212985	eneo TVA-1201TRP	UTP Transmitter+Receiver, UTP, BNC, 150m, Indoor, HD TVI CVI, AHD, CVBS, Passive



eneo is a registered trademark of  
VIDEOR E. Hartig GmbH  
Carl-Zeiss-Straße 8

63322 Rödermark, Deutschland

Phone: +49 6074 - 888 - 300  
Fax: +49 6074 - 888 - 100  
E-Mail: [info@eneo-security.com](mailto:info@eneo-security.com)  
Web: [www.eneo-security.com](http://www.eneo-security.com)

Stay informed and subscribe  
to the eneo newsletter

